

Solutions Guide

Volume 3.0



CIVCO[®]
Radiotherapy
a better way

Directory



5-14

Universal Couchtop™ & Overlays

Universal Couchtop Long Extension
Universal Couchtop 1 Piece
CT Overlays
Lok-Bars™
Accessories



15-25

Body Pro-Lok™ SBRT Immobilization

Body Pro-Lok ONE™ System
Body Pro-Lok System
Body Pro-Lok Rails-Only System



26-27

trUpoint ARCH™ SRS/SRT Immobilization



28-30

Protura™ Robotic Patient Positioning System



31-60

Head & Neck

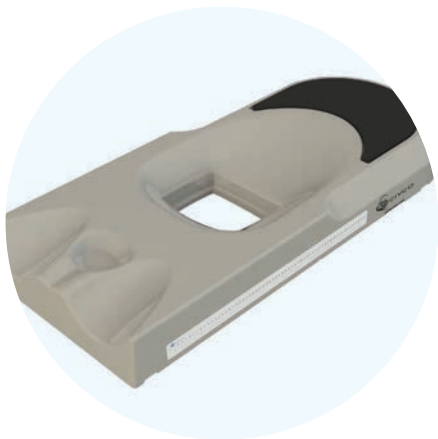
Thermoplastics
Type-S™ System
Uni-frame® System
Posifix® System
Headrests
Shoulder Retractor
Precise Bite™



61-73

Breast & Thorax

Breastboards
New Horizon™ Prone Breastboard
Posirest™-2
Wing Boards™
Thermoplastics
Thorawedge™
Vac-Lok™ Cushions



74-81

Hip & Pelvic

Bellyboards
Combifix™
HipFix®
Positioning Cushions
Vac-Lok Cushions



82-91

Vac-Lok™ Cushions & Positioning Aids

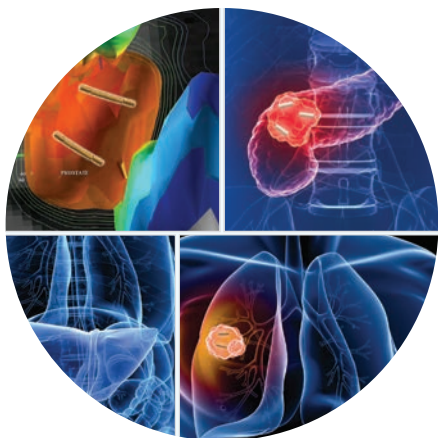
Vac-Lok Cushions & Accessories
Multifix™
RediFoam™
Foam Cushions
Patient Marking



92-95

MRSeries™

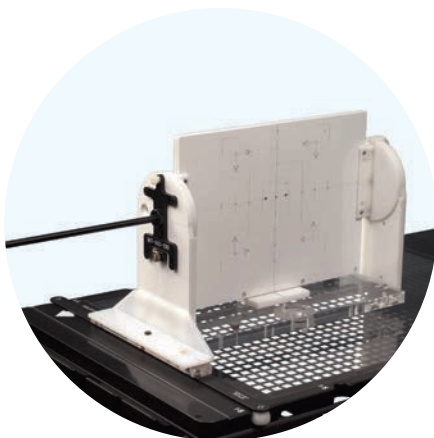
MRSeries products are intended for use in the MR environment. Always refer to product labeling to identify whether a device is MR Safe or MR Conditional.



96-101

Fiducial Markers

Specialty Fiducials
Gold Markers
Multiple Needle Gauge Sizes



102

Quality Assurance

Mechanical Alignment



103-106

Miscellaneous Accessories

Patient Shielding
Bolus
Skin Care
Grip Rings™ & Straps
Patient Transfer Board
Digital Level

Welcome to the 2016 CIVCO Radiotherapy Solutions Guide!

You will undoubtedly notice our new name and logo, but one thing remains the same – our dedication to providing **A BETTER WAY** to improve outcomes for patients and healthcare providers worldwide. I would like to spend a moment describing the changes taking place at CIVCO Radiotherapy. Until just a few months ago, CIVCO Medical Solutions, Radiation Oncology was part of CIVCO Medical Solutions which included our sister company, CIVCO Medical Solutions, Multi-Modality Imaging. For the past two years we have been working to separate the two organizations to enable better focus and service in our respective markets. Earlier this year, that separation was completed. As part of that process, we, CIVCO Radiation Oncology, needed to redefine who we are and what we aspire to as a company.



The name change was driven by our desire to bring clarity and focus to what we do – provide patient positioning and motion management solutions for patients undergoing treatment for cancer utilizing high-energy rays or beams of subatomic particles. As a global company we chose to utilize the more recognized global terminology of radiotherapy – thus CIVCO Radiotherapy!

As part of the discernment process for a new name, we also redefined our Mission and Vision. Our mission describes why we get up and go to work every day – To improve outcomes for patients and healthcare providers worldwide; and how we are going to do that – by providing high-quality, innovative, patient-centric radiotherapy solutions.

Our vision confirms our dedication to being more responsive and collaborative while serving the needs of all global markets – To be the leading innovation partner in radiotherapy solutions worldwide.

The new logo represents our commitment to patient-centricity and to providing a better way of improving patient outcomes. You might even notice a “celebratory” figure in the logo!

We hope the newest edition of the solutions guide with the largest breadth of immobilization and patient positioning solutions continues to help aid your efforts to improve patient care and outcomes. Thank you for your continued patronage and support of CIVCO Radiotherapy. We look forward to serving your needs now and in the future.

A handwritten signature in black ink, appearing to read 'Nat Geissel'.

Nat Geissel
Executive Vice President and General Manager

MISSION

To improve outcomes for patients and healthcare providers worldwide by providing high-quality, innovative, patient-centric radiotherapy solutions.

VISION

To be the leading innovation partner in radiotherapy solutions worldwide.



“

CIVCO's dosimetrically matched Universal Couchtops give us more confidence in dose calculations when planning patients who will be treated on the linac. Not having to use overlays has definitely provided us additional conveniences.

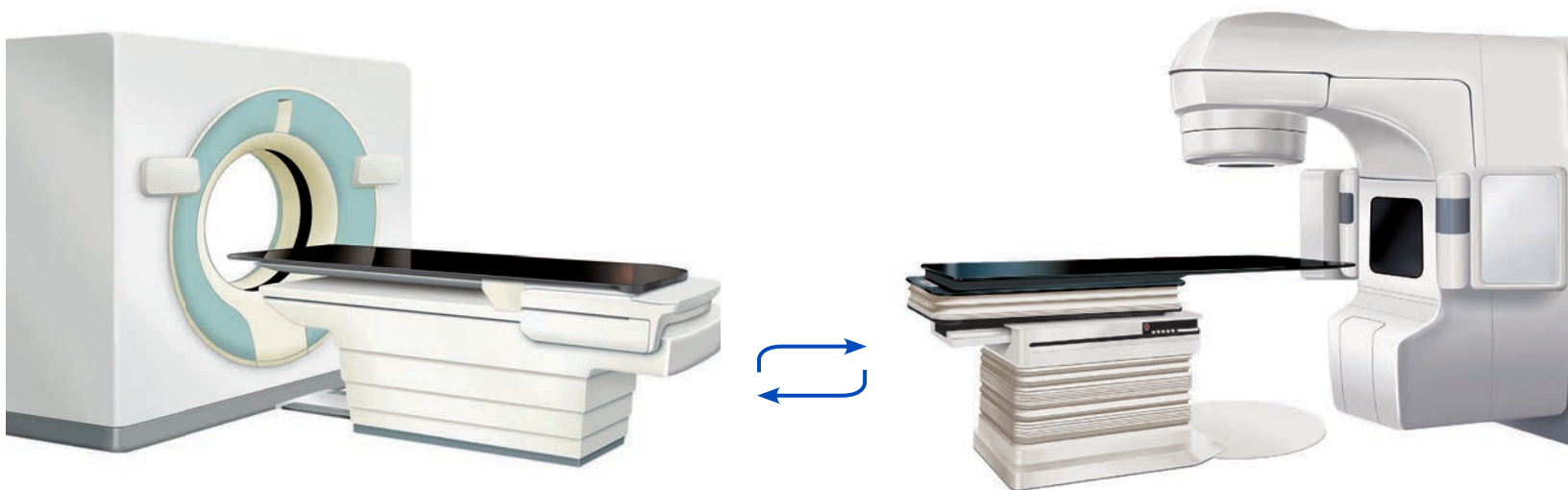
**Brian Smaga, Radiation Therapist,
Agnesian Healthcare Cancer Care Services,
Fond du Lac, Wisconsin**

”

Universal Couchtop™ & Overlays

Safe, Efficient Treatment Planning & Imaging

The Universal Couchtop (UCT) family is comprised of strong and lightweight couchtops with low attenuation and surface dose. These couchtops are ideal for IGRT tracking with options completely free of rails and junctions in the treatment area. They are available for most CT scanners and linear accelerators, providing a dosimetrically matched treatment platform from simulation to treatment.



Universal Couchtop™ Long Extension

Universal Couchtop™
Long Extension

DoseMatch™
Technology

Designed for efficiency and performance, the Universal Couchtop Long Extension (UCT LE) is ideal for SBRT and IGRT. The UCT LE facilitates better delivery of dose and target coverage by eliminating the interference of rails and junctions.

- Large, junction-free and artifact-free treatment area of 47 inches (119 cm)
- DoseMatch™ Technology - Dosimetric consistency via CT SIM compatible models
- Prodigy™ 2 indexing with 7 cm spacing
- Seven extension options to treat many disease sites
- Low attenuation and no overlay is required



Self-locking Extension Seam located outside of treatment field

CT Compatibility

GE Discovery ST	MTIL6341
GE VCT1700	MTIL6343
GE VCT 2000	MTIL6343
GE HiSpeed	MTIL6341
Philips Brilliance	MTIL6440
Siemens Biograph	MTIL6042
Siemens Definition MPT Cradle	MTIL6045
Siemens Definition PHS 1 A/B Cradle	MTIL6044
Siemens Definition PHS 4	MTIL6046
Siemens Somatom Sensation	MTIL6043
Toshiba Aquilion	MTIL6540
Toshiba Aquilion One	MTIL6541

Linac Compatibility

Varian Exact	MTIL6140
Protura on Varian	MTIL6141
Elekta	MTIL6240
Siemens TXT or Protura	MTIL6040
Siemens ZXT	MTIL6041

**Visit www.civcort.com
for NEW Linac and CT
compatibilities!**

Extensions to treat many disease sites

- 1 Posifix Extension
(trUpoint ARCH™
SRS/SRT Immobilization)
- 2 Long Extensions
(Body Pro-Lok™
SBRT Immobilization)
- 3 Type-S and Posifix Extensions
(Head & Neck Positioning)



trUpoint™
ARCH™



Body Pro-Lok ONE™
Body Pro-Lok™



Type-S™ & Posifix®

Universal Couchtop™ Long Extensions



Rectangular Extension

- Allows for direct attachment of CIVCO's ONEBridge™, Body Pro-Lok™ Bridges and accessories for SBRT Immobilization
- Optional Rectangular Extension with embedded wires provides additional verification to ensure the patient is correctly aligned under Linac isocenter relative to table position

MTIL6661 w/ embedded wires

MTIL6660



Type-S™ Extension

- Allows for direct attachment of CIVCO's ONEBridge, Body Pro-Lok Bridges and accessories for SBRT Immobilization
- Allows for direct attachment of all CIVCO Type-S Thermoplastics, including the ClearVision™ open face mask designed for use with vision/camera systems

MTIL6665

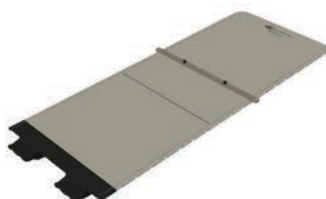


Posifix® Extension

- Allows for direct attachment of CIVCO's ONEBridge, Body Pro-Lok Bridges and accessories for SBRT Immobilization
- Allows for direct attachment of CIVCO's Posifix Thermoplastics and trUpoint ARCH™ SRS/SRT System

MTIL6668 trUpoint ARCH SRS/SRT System Compatible

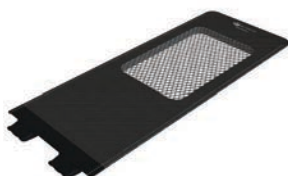
MTIL6666



Kevlar Extension

- Allows for direct attachment of CIVCO's ONEBridge, Body Pro-Lok Bridges and accessories for SBRT Immobilization
- Compatible with Varian's Calypso® System

MTIL6662



Grid Extension

- Allows for direct attachment of CIVCO's ONEBridge, Body Pro-Lok Bridges and accessories for SBRT Immobilization
- Helps minimize surface dose and skin reactions

MTIL6663

See pages 17 & 19 for Universal Couchtop™ and Body Pro-Lok Package and Respiratory Restriction Package options.

Universal Couchtop™ Long Extension Accessories



UCT Head Extension

- Secures to any UCT via a Prodigy 2 Lok-Bar™ allowing an additional 17 cm of treatment area
- Also compatible with Universal Couchtop 1 Piece

MTIL6617



Varian End Plate

- Allows for use of QA phantoms

MTIL6667



Long Extension Storage Device

- Wall storage for up to four long extensions

MTIL6000SU



Patient Handles

- Clamp to the Universal Couchtop, providing a stable place for immobilized patients to place their hands

MTIL662501 Right handle

MTIL662502 Left handle



Accessory Rail

MTIL6630



Prodigy™ 2 Lok-Bar

- For use with all Universal Couchtops

MTIL6050 Standard

MTIL6053 Fiberglass (recommended for use with UCT LE Kevlar Extension)

MTIL6051 Transverse (allow for offsetting patient laterally on the couchtop)

Universal Couchtop™ 1 Piece



The Universal Couchtop 1 Piece is an ideal IGRT and SBRT solution with a uniform design and no junctions. It facilitates better dose delivery and target coverage.

- DoseMatch™ Technology - Matching CT overlay for dosimetric consistency between simulation, treatment planning and treatment
- Low attenuation and no SBRT overlay is required
- Allows for attachment of CIVCO's ONEBridge™, Body Pro-Lok™ Bridges and accessories for SBRT Immobilization (see pages 15-25)
- Prodigy™ 2 indexing at 7 cm increments



CT Compatibility

GE Discovery ST	MTIL6321
GE Global 1700	MTIL6322
GE Global 2000	MTIL6323
GE HiSpeed	MTIL6320
Philips Brilliance	MTIL6420
Siemens Biograph	MTIL6022
Siemens Definition PHS 1 A/B Cradle	MTIL6024
Siemens Definition PHS 4 Cradle	MTIL6026
Siemens Somatom Sensation	MTIL6023
Toshiba Aquilion	MTIL6520
Toshiba Aquilion One	MTIL6521

Linac Compatibility

Varian Exact	MTIL6120
Protura on Varian	MTIL6121
Elekta	MTIL6220
Siemens TxT or Protura	MTIL6020
Siemens ZXT	MTIL6021

Accessories



Varian End Plate for the UCT 1 Piece

Designed to slide onto the end of the couchtop, then can be tightened securely into place. This allows for the use of various QA devices.

MTIL6612



Prodigy™ 2 Lok-Bar

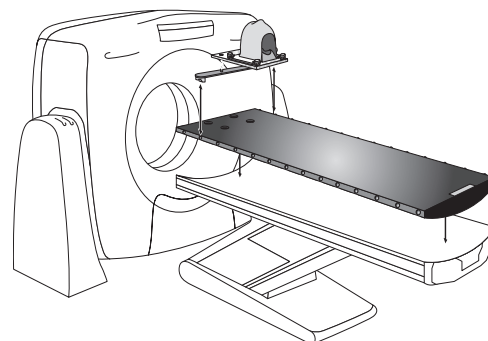
The Prodigy 2 Lok-Bar is for use with all Universal Couchtops

MTIL6050	Standard
MTIL6051	Transverse (allow for offsetting patient laterally on the couchtop)

CT Overlays

Carbon fiber one piece overlays securely lock onto a cradle, providing a surface consistent with treatment couchtops. They are lightweight and durable, allowing them to be easily removed or reinserted for use on imaging machines.

- Made of carbon fiber with a foam core
- Two-pin Lok-Bars™ allow positioning devices to be indexed to couchtop (14 cm intervals)



The following CT Overlay options are available; part numbers include 1 standard Lok-Bar:

CT Overlay for	Part #	Dimensions	Indexing Style	Compatible Lok-Bar	Compatible Transverse Lok-Bar
Siemens					
SOMATOM Sensation (before Aug 2004)	MTIL3001	245 x 53 x 3.2 cm	Prodigy	MTIL3653	MTIL3652
SOMATOM Sensation (after Aug 2004)	MTIL3013	245 x 53 x 3.2 cm	Prodigy	MTIL3653	MTIL3652
SOMATOM Definition (PHS4 cradle)	MTIL3019	220 x 53 x 3.8 cm	Prodigy	MTIL3653	MTIL3652
SOMATOM Definition, Emotion, Spirit, Perspective (PHS 1A or 1B cradle)	MTIL3020	218 x 53 x 4.7 cm	Prodigy	MTIL3653	MTIL3652
Biograph	MTIL4101	239 x 53 x 2.7 cm	Interloc	MTIL3151	MTIL3152
Toshiba					
Aquilion (Short)	MTIL3704	201 x 53 x 4.2 cm	Interloc	MTIL3151	MTIL3152
Aquilion (Long)	MTIL3705	231 x 53 x 4.2 cm	Interloc	MTIL3151	MTIL3152
Aquilion One	MTIL3706	252 x 53 x 2.6 cm	Prodigy	MTIL3653	MTIL3652
GE					
HiSpeed Advantage, HiSpeed CT/i, LightSpeed QX/i	MTIL3300	229 x 53 x 5.1 cm	Interloc	MTIL3151	MTIL3152
HiSpeed LX/i, HiSpeed FX/i, HiSpeed DX/i	MTIL3301	229 x 53 x 5.1 cm	Interloc	MTIL3151	MTIL3152
Discovery LS	MTIL3306	266 x 48 x 4.8 cm	Interloc	MTIL3350	-
Discovery ST (H-Power Base)	MTIL3310	266 x 53 x 5.1 cm	Interloc	MTIL3151	MTIL3152
LightSpeed VCT Discovery ST (Global Base)	MTIL3311	217 x 53 x 5.1 cm	Prodigy	MTIL3653	MTIL3652
Philips					
Philips/Marconi MX8000	MTIL3502	245 x 53 x 3.2 cm	Prodigy	MTIL3653	MTIL3652
Gemini PET/CT	MTIL3403	253 x 48 x 3.7 cm	Interloc	MTIL3453	-
Gemini PET/CT	MTIL3404	253 x 53 x 3.7 cm	Interloc	MTIL3151	MTIL3152

For MR Overlay options, see page 93.

Types of Indexing



	Prodigy™ 2	Prodigy	Interloc®	Exact®
Description	Small protruding hemisphere	Protruding hemisphere	Notched	Varian Exact notched style
Spacing	7 cm	14 cm	14 cm	14 cm
Available on	Universal Couchtop™	Various Couchtops	Various Couchtops	Other Couchtops

How Indexing Works

Every Indexed Patient Positioning System™ begins with an indexed couchtop or overlay. These tops feature an array of indexing points running down the side of the couchtop, each spaced an identical 14 cm apart or 7 cm apart on the Universal Couchtop™. A Lok-Bar™ is also provided with every couchtop or overlay. Every Lok-Bar features two pins that interface with the two holes on CIVCO's line of patient positioning and fixation devices. Lok-Bars remain with the couchtop.

To index a product, attach the Lok-Bar to any of the indexing points. Then set the patient positioning device on the two pins on the Lok-Bar. Indexing patient positioning and fixation devices to the same indexing notches for every treatment ensures that the device is in the same location and is "square" with the couchtop for every treatment. This definitive repositioning of the device relative to the treatment table allows clinicians to confidently tighten the tolerance window in the record-and-verify system – an important enhancement.

The result: increased target accuracy with increased patient throughput.

Lok-Bars™



Prodigy™ 2 Lok-Bar

The Prodigy 2 Lok-Bar is for use with all Universal Couchtops™.

MTIL6050	Standard
MTIL6053	Fiberglass (recommended for use with UCT LE Kevlar Extension)
MTIL6051	Transverse (allow for offsetting patient laterally on the couchtop)



Prodigy Lok-Bar

The Prodigy Lok-Bar is for use with Prodigy style indexed couchtops. The Slim Prodigy Lok-Bar features smaller side profiles.

MTIL3650	for 53 cm wide couchtop
MTIL3651	for 50 cm wide couchtop
MTIL3653	Slim Prodigy for 53 cm wide couchtop



Interloc® Lok-Bar

The Interloc Lok-Bar is for use with Interloc style indexed couchtops.

MTIL3350	for 48 cm wide couchtop
MTIL3051	for 49.5 cm wide couchtop
MTIL3850	for 50 cm wide couchtop
MTIL3151	for 53 cm wide couchtop

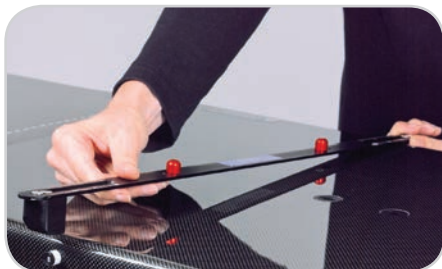


Exact® Lok-Bar

The Exact Lok-Bar is for use with Exact or Interloc style indexed couchtops.

20VARSUB10	for 53 cm wide couchtop
------------	-------------------------

Lok-Bars™



PinnPoint™ Lok-Bar

The PinnPoint Lok-Bar allows two-pin indexable products to be used with the PinnPoint Indexing system.

MTIL5050	for 50 – 52 cm wide couchtops
MTIL5051	for 45.5 – 47.5 cm wide couchtops

Transverse Lok-Bar

The Transverse Lok-Bar allows for lateral movement of the two-pin system across the couchtop, providing more options in positioning the patient on the couchtop. The Transverse Lok-Bar is available in Prodigy™, Prodigy 2, Interloc®, PinnPoint™, Exact® and Medical Intelligence indexing styles.

MTIL3152	Interloc, 53 cm
MTVAR46	Exact, 53 cm
MTIL3652	Prodigy, 53 cm
MTIL6051	Prodigy 2, 53 cm
MTIL5052	PinnPoint, 50 – 52 cm
MTIL5053	PinnPoint, 45.5 – 47.5 cm
MTIL3950	Medical Intelligence

Slide Guide Lok-Bar

The Slide Guide Lok-Bar does not lock down to the indexing points along the couchtop but slides longitudinally along the couchtop. It is designed to prevent lateral movement and is useful for longer devices such as bellyboards, breastboards and Vac-Lok™ Cushions, which contract during forming.

MTVL00853	Standard, 40 – 53 cm
MTIL1006	Transverse, 48 – 53 cm

Three-Pin Lok-Bar MRSeries™

Three-Pin Lok-Bars allow you to index MRI compatible devices to your MRI couchtop. They also help prevent non-MRI compatible devices from being used on an MRI machine.

MTIL3351	Interloc 50 cm
MTIL3352	Interloc 53 cm
MTIL3454	Prodigy 50 cm
MTIL3455	Prodigy 40 cm

Couchtops & Overlays - Accessories & Storage



Foot Extension

A simple foot extension is available to maximize range for feet-first scans. The extension allows the patient's feet to extend up to 36 cm off the end of the table. The Foot Extension is designed for feet-first CT applications and is not suitable for use as a head extension.

MTIL3006001 Foot Extension, Interloc (shown)

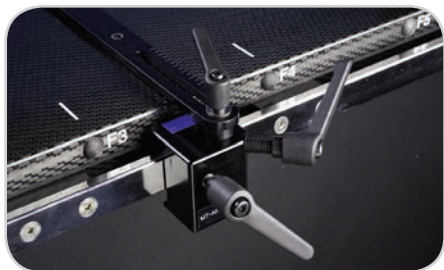
MTIL3006002 Foot Extension, Prodigy



Overlay Stand

The Overlay Stand is ideal for shared CT rooms, where space is limited. The Overlay Stand creates a fast and effective way to store and protect your CT overlay between uses. The base and strap plate easily mount to the wall, allowing for quick access and out-of-the-way storage. Upper straps secure the overlay between uses.

MTIL1104



Accessory Rail Locking Block

The Accessory Rail Locking Block locks various positioning aids to the rails along the side of the couchtop. A Lok-Bar™ can attach to the accessory Locking Block to provide a two-pin system for couchtops without indexing.

MTARB001 Accessory Rail Locking Block (Right)

MTARB002 Accessory Rail Locking Block (Left)

MTIL1000 Accessory Rail Lok-Bar

“

We have become a referral center for SBRT patients and have employed CIVCO's Body Pro-Lok system for several years. It is my opinion that reproducible immobilization and abdominal compression is vital to assist in accurate targeting of lung cancers and other localized tumors. We recently upgraded our Body Pro-Lok system to the new Body Pro-Lok ONE and added a second complete system. We find it to be more flexible and efficient, especially with larger patients, without sacrificing the precision I demand.

Ronald C. McGarry, M.D., Ph. D. University of Kentucky, Lexington, Kentucky

”

Body Pro-Lok™ Systems for SBRT Immobilization

Customizable, Efficient, Reproducible

The Body Pro-Lok ONE™, Body Pro-Lok and Rails-Only Systems provide an easy-to-use modular system for complex SBRT setups, including unique design features allowing for improved patient positioning and compression.

Each system provides full body immobilization for hypofractionation treatments and allows customized setups to meet the patient's needs, including two options (plate or belt) for reducing respiratory motion.



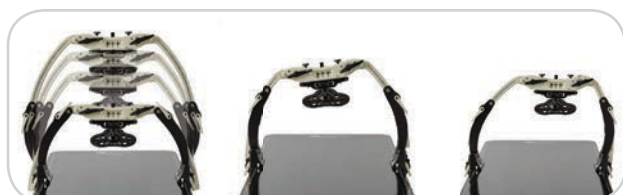
Body Pro-Lok ONE™ Respiratory Restriction



Body Pro-Lok ONE provides one simple solution for complex SBRT patient setups. This system features the ONEBridge, with unique design features allowing for improved patient positioning and compression plate restriction.

ONEBridge™ with Standard Respiratory Plate

- Variable height adjustment with just one bridge
- Lateral offset ability allows the bridge and plate to adapt to the patient's natural posture and body type
- Tilting offset ability allows optimal patient positioning for enhanced gantry clearance
- Advanced latch engineered to release in less than 3 seconds for patient safety
- The Respiratory Plate places pressure at the level of the diaphragm to assist in restricting respiratory movement



ONE Respiratory Belt

- Provides pneumatic compression and immobilization to the abdominal region for SBRT treatments



For customization options, see pages 21 – 25.

Body Pro-Lok ONE™ Integration



Universal Couchtop™

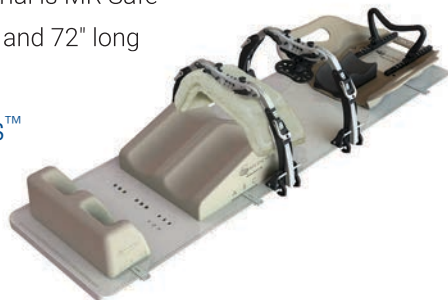
- Body Pro-Lok ONE positioning devices connect to the Universal Couchtop, allowing customized setups with bridges that secure directly to couchtop
- The Universal Couchtop is available for Linac and CT, providing an environment in simulation that is reproducible and dosimetrically matched in treatment

See pages 5 – 9 for details.



ONEPlatform™

- Universal Couchtop profile and indexing options provide for seamless integration of CIVCO's positioning devices
- Indexing holes and Transverse Lok-Bar™ allow lateral offset of platform for optimal clearance
- Kevlar material is MR Safe
- Lightweight and 72" long



Elekta iBEAM® evo Couchtop

- ONEBridge and ONE Respiratory Belt are compatible via a special adapter



ONEBridge w/ evo Adapter



ONE Respiratory Belt w/ evo Adapter

Comprehensive Accessory Packages

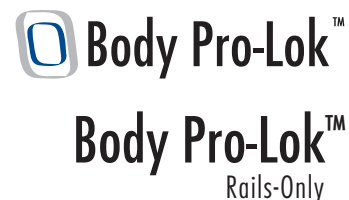
	UCT	evo
ONEBridge™	Qty 2	Qty 2
ONEBridge Storage Base	2	2
Body Pro-Lok ONE Respiratory Belt	1	1
Standard Respiratory Plate	1	1
Clam-Lok™ Cushion	2	2
Kneefix™ 3 Cushion	1	1
Feetfix™ 3 Cushion	1	1
Monarch™ Overhead Arm Positioner	0	1
T-Shape Vac-Lok™	0	1
Body Pro-Lok ONE evo Adapter	0	2
	BPLONEUPG3	BPL230

ONEPlatform Packages

	One	Two
ONEPlatform w/ four 3-pin Lok-Bars	Qty 1	Qty 1
ONEBridge	1	2
ONEBridge Storage Base	1	2
Body Pro-Lok ONE Respiratory Belt	1	1
Standard Respiratory Plate	1	1
Clam-Lok Cushion	1	2
Kneefix 3 Cushion	1	1
Feetfix 3 Cushion	1	1
	BPL100	BPL110
Body Pro-Lok ONE evo Adapter (in addition to all accessories above)	2	4
	BPL200	BPL210

Upgrade your current Body Pro-Lok System.
Contact your sales representative for more information.

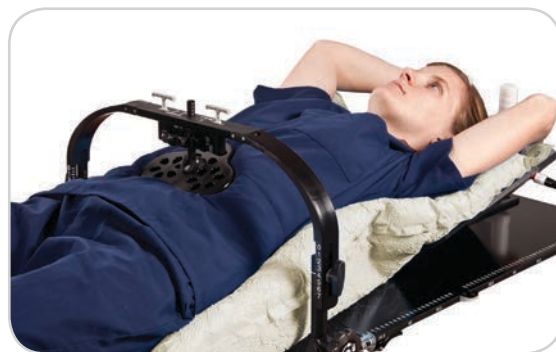
Body Pro-Lok™ & Rails-Only Respiratory Restriction



The Body Pro-Lok and Rails-Only systems provide an easy-to-use modular system for complex SBRT setups. These modular components are indexable to allow for reproducible setup day to day, including bridges, respiratory plate and belt options to help control patient breathing.

Body Pro-Lok Bridges with Standard Respiratory Plate

- Three bridge options accommodate different patient sizes and provide immobilization from above
- The Respiratory Plate places pressure at the level of the diaphragm to assist in restricting respiratory movement



Respiratory Belt

- Provides pneumatic compression and immobilization to the abdominal region for SBRT treatments

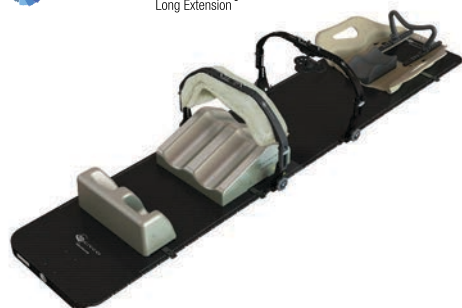


For customization options, see pages 21 – 25. For Rails-Only Packages, see page 20.

Universal Couchtop™

- Body Pro-Lok positioning devices connect to the Universal Couchtop via adapters, allowing customized setups with bridges that will secure directly to the couchtop
- The Universal Couchtop is available for Linac and CT, providing an environment in simulation that is reproducible and dosimetrically matched in treatment

See pages 5 – 9 for details.



Carbon Fiber & Kevlar Platforms

- Provides seamless setup of patient from imaging/simulation to the Linac unit
- Compatible with existing CIVCO positioning equipment via standard two-pin (Carbon Fiber) and three-pin (Kevlar) indexing
- Provides low attenuation with homogeneous design for planning consistency



Carbon Fiber Platform



Kevlar Platform



Accessory Packages

	Comprehensive	Respiratory Restriction
Type 1B Bridge	Qty 2	Qty 1
Type 2 Bridge	2	1
Type 3 Bridge	1	-
Prodigy™ 2 Lok-Bar	3	-
Standard Respiratory Plate	1	1
Respiratory Belt	1	1
Type 2 & 3 Bridge Adapter Pair	2	1
Type 1B & Shoulder Restraint Bridge 2 Adapter Pair	3	1
Respiratory Belt Adapter Pair	1	1
Forehead Restraint	1	-
Shoulder Restraint Bridge 2	1	-
UCT Patient Handle (Right)	1	-
UCT Patient Handle (Left)	1	-
Clam-Lok™ Cushion	2	-
	MTSBRT310	MTSBRT300

Carbon Fiber & Kevlar Platform Packages

	Lite	Ultra-Lite
Platform (Carbon Fiber or Kevlar)	Qty 1	Qty 1
Type 1B Bridge	2	1
Type 2 Bridge	2	1
Type 3 Bridge	1	-
Standard Respiratory Plate	-	1
Respiratory Belt	-	1
T-Pin Lok-Bar	4	4
Clam-Lok Cushion	1	2
Kneefix™ 2 Cushion	-	1
Carbon Fiber	MTSBRT001L	MTSBRT320
Kevlar	MTSBRT410K	MTSBRT420K

Body Pro-Lok™ Rails-Only Integration

Body Pro-Lok™
Rails-Only




Rails-Only

The Body Pro-Lok Rails-Only System utilizes Body Pro-Lok Bridges and accessories when Universal Couchtop™ is not available and avoidance of an overlay or platform is preferred. The Interloc® and Prodigy™ versions are MRI compatible.



Rails-Only Systems

All part numbers listed below include one rail assembly with attached Lok-Bars™. Bridges and accessories are sold separately unless specified otherwise. The Interloc and Prodigy versions are MRI compatible.

MTSBRT053	50cm - Prodigy	 MRSeries™
MTSBRT051	53cm - Prodigy	 MRSeries™
MTSBRT052	50cm - Interloc	 MRSeries™
MTSBRT050	53cm - Interloc	 MRSeries™
MTSBRT060	53cm - Exact/IGRT	
MTSBRT059	53cm - Elekta (includes four T-Pin Two-Pin Lok-Bars)	

Accessory Packages

	Comprehensive	Respiratory Restriction
Type 1B Bridge	Qty 2	Qty 1
Type 2 Bridge	2	1
Type 3 Bridge	1	-
Standard Respiratory Plate	1	1
Respiratory Belt	1	1
Forehead Restraint	1	-
Shoulder Restraint Bridge 2	1	-
Patient Handle	1	-
Patient Handle (mirror)	1	-
Clam-Lok™ Cushion	2	-
	MTSBRT360	MTSBRT350

For customization options, see pages 21 – 25.

System Customization

See ✓ for compatibility



ONEBridge™

Unique design features allow for improved patient positioning and compression plate restriction. See page 16 for more details.

- ✓ BPL ONE
- BPL & Rails-Only
- ✓ Universal Couchtop

BPL001



Body Pro-Lok™ Bridges

Three bridge options accommodate different patient sizes and provide immobilization from above.

- BPL ONE
- ✓ BPL & Rails-Only
- ✓ Universal Couchtop
with Adapter (p.25)

MTSBRT039	Type 1B (small)
MTSBRT007	Type 2 (medium)
MTSBRT031	Type 3 (large)

Bridge Accessories



Respiratory Plate

Provides pneumatic compression and immobilization to the abdominal region.

MTSBRT003



Clam-Lok™ Cushion

Forms to comfortably enhance immobilization from above.

MTSBRT202



Forehead Restraint

Attaches to the bridge and provides a padded restraint mechanism for the head.

MTSBRT018



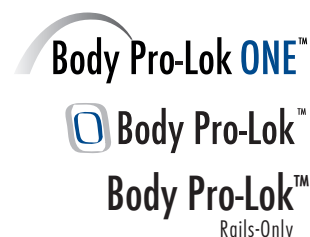
Body Pro-Lok ONE™ evo Adapter

Allows for 1 cm indexing of the ONEBridge and ONE Respiratory Belt to iBEAM® evo Couchtops.

BPL010 1 Pair

System Customization

See ✓ for compatibility



ONE Respiratory Belt

Provides pneumatic compression and immobilization to the abdominal region.

BPL002

- ✓ BPL ONE
- BPL & Rails-Only
- ✓ Universal Couchtop



Respiratory Belt

Provides pneumatic compression and immobilization to the abdominal region.

MTSBRT004

- BPL ONE
- ✓ BPL & Rails-Only
- ✓ Universal Couchtop with Adapter (p.25)



ONEPlatform™

Universal Couchtop™ profile and indexing options provide seamless integration of positioning devices. Weight: 14.5 lbs (6.6 kg) Length: 72" (1829 mm) See page 17 for more details.

BPL003

- ✓ BPL ONE
- BPL & Rails-Only
- Universal Couchtop



Carbon Fiber Platform

Provides seamless setup of the patient from imaging/simulation to the Linac unit. Weight: 18.8 lbs (8.5 kg) Length: 83" (2108 mm) See page 19 for more details.

MTSBRT002

- BPL ONE
- ✓ BPL



Kevlar Platform

Provides seamless setup of the patient from imaging/simulation to the Linac unit. Weight: 12.4 lbs (5.6 kg) Length: 56.25" (1429 mm) See page 19 for more details.

MTSBRT070

- BPL ONE
- ✓ BPL



Monarch™ Overhead Arm Positioner

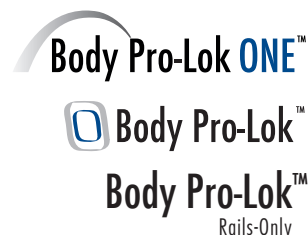
Dual function hand grips allow for natural flexion of the patient's wrists while providing increased positioning options for the clinician.

OAP110

- ✓ BPL ONE
- ✓ BPL & Rails-Only
- ✓ Universal Couchtop

System Customization

See ✓ for compatibility



T-Shape Vac-Lok™

Provides arms-up positioning while cradling the torso region. May be used with the Monarch Overhead Arm Positioner or a Wing Board™.

- ✓ BPL ONE
- ✓ BPL & Rails-Only
- ✓ Universal Couchtop

MTVL0017



Kneefix™ 3 & Feetfix™ 3 Cushions

Contributes to better stability and reproducibility in the supine position.

- ✓ BPL ONE
- ✓ BPL & Rails-Only
- ✓ Universal Couchtop

301052	Kneefix 3
301071	Feetfix 3
301055	Elevation Blocks



Patient Handles

Patient handles clamp to the ONEPlatform™ or Universal Couchtop™, providing a stable place for immobilized patients to place their hands.

- ✓ BPL ONE
- BPL & Rails-Only
- ✓ Universal Couchtop

MTIL662501	Right handle
MTIL662502	Left handle



Patient Handles

Patient handles clamp to the Carbon Fiber and Kevlar Platforms or the Rails-Only system, providing a stable place for immobilized patients to place their hands.

- BPL ONE
- ✓ BPL & Rails-Only
- Universal Couchtop

MTSBRT005	Right handle
MTSBRT0051	Left handle



Shoulder Restraint Bridge 2

Shoulder Restraint Bridge 2 provides padded cups to aid in comfortably immobilizing the shoulders.

- BPL ONE
- ✓ BPL & Rails-Only
- ✓ Universal Couchtop
with Adapter (p.25)

MTSBRT038

System Customization

See ✓ for compatibility



Three-Pin Lok-Bar™

Allows positioning devices to be fixed to the ONEPlatform™ or Universal Couchtop™ for enhanced reproducibility.

- ✓ BPL ONE
- BPL & Rails-Only
- ✓ Universal Couchtop

MTIL6054 Prodigy 2, 53 cm



Slide Guide Lok-Bar

Ideal for Vac-Lok™ bags, the Slide Guide Lok-Bar slides longitudinally along the couchtop rather than locking down to indexing points.

- ✓ BPL ONE
- BPL & Rails-Only
- ✓ Universal Couchtop

MTVL00853



Transverse Lok-Bar

Gives the ability to move the 2-pin system laterally across the couchtop.

- ✓ BPL ONE
- BPL & Rails-Only
- ✓ Universal Couchtop

MTIL6051 Prodigy 2, 53 cm



T-Pin Lok-Bar

Allows most indexable positioning aids to be indexed to the Body Pro-Lok™ Platform.

- BPL ONE
- Body Pro-Lok
- ✓ Carbon Fiber Platform
- Universal Couchtop

MTSBRT009 Two Pin



T-Pin Lok-Bars

Allows most indexable positioning aids to be indexed to the Body Pro-Lok Rails-Only System.

- BPL ONE
- ✓ Body Pro-Lok Rails-Only
- Universal Couchtop

MTSBRT055 Two Pin

MTSBRT054 Three Pin



Prodigy™ 2 Lok-Bar

Allows positioning devices to be indexed to the Universal Couchtop.

- BPL ONE
- BPL & Rails-Only
- ✓ Universal Couchtop

MTIL6050

System Customization

See ✓ for compatibility



ONEBridge™ Storage Base

Designed to sit on a countertop or cart.
Holds the ONEBridge in an upright position.

- ✓ BPL ONE
- BPL & Rails-Only
- Universal Couchtop

BPL005



Storage

Two storage options, a cart and a wall mounted unit, are available.

- BPL ONE
- ✓ BPL Bridges
- Universal Couchtop

MTSBRT203 Cart
MTSBRT224 Wall Unit



Patient Transfer Base

The Patient Transfer Base allows for the transfer of a completely immobilized patient.

- BPL ONE
- Body Pro-Lok
- ✓ Carbon Fiber Platform
- Universal Couchtop

MTSBRT011



Adapters

Allows Body Pro-Lok™ Bridges and Respiratory Belt to connect directly to the Universal Couchtop™.

MTIL6615 Type 2 & 3 Bridge Adapter, Qty 2 (top photo)
MTIL6616 Type 1B Bridge & Shoulder Restraint Bridge 2 Adapter, Qty 2 (middle photo)
MTIL6620 Respiratory Belt Adapter, Qty 2 (bottom photo)

For additional Wing Board™ and Headrest options, see pages 55, 56 & 70.



trUpoint ARCH™

SRS/SRT Immobilization

Accurate, Repeatable, Comfortable Hold

The trUpoint ARCH is an ideal solution for non-invasive Stereotactic Radiosurgery (SRS) and Stereotactic Radiotherapy (SRT), with multiple points of fixation for an accurate, secure hold.



trUpoint ARCH™ SRS/SRT Immobilization



Immobilization with trUpoint ARCH is accomplished using multiple components – a custom head support, bite tray, thermoplastic mask and nasion cushions – allowing a truly custom hold for superior results. Each of these components are designed specifically for SRS patient immobilization and each trUpoint ARCH setup is specific to the individual patient, ensuring excellent reproducibility from fraction to fraction.

- Proven to allow less than 1 mm of patient movement during intrafraction immobilization testing
- Frameless arch design provides a secure hold with no surgical attachment to the patient
- Interfraction patient positioning tests show equivalency to higher-priced competitive systems
- When used with CIVCO's Universal Couchtop™, setups are dosimetrically matched from simulation to treatment



System Customization

Universal Couchtop Universal Couchtop™ Long Extension

Allows for direct attachment of trUpoint ARCH.

See pages 6 – 8 for Universal Couchtop Long Extension details.

MTIL6668	Universal Couchtop Long Extension Posifix – trUpoint ARCH Compatible
----------	---

trUpoint ARCH Compatible Baseplates

108072	iBEAM™ Overlay Adapter
108020	Posifix® IMRT Extension
101019	Posifix-1 Acrylic Overlay MRSeries™



trUpoint ARCH Starter Kit MRSeries™

Kit includes: trUpoint ARCH, Acrylic Posifix Baseplate, Storage Base, Posicast® SRS Thermoplastic (x10), Individual Head Support (x10), Bite Putty (12 applications), Bite Cups (x12), Bite Trays (x12), Putty Dispenser, Nasion Cushions (x12)

*Putty Dispenser is MR Unsafe and must be used for setup outside of the MR environment.

MTHF150

Replacement Parts

MTHF016	Nasion Cushions, Qty 12
20HF033	Bite Tray, Qty 12
MTHF135	Bite Cup, Qty 12
MTHF225	Bite Putty, Qty 12
MTIHS01	Individual Headrest, Posifix style
970031	Posicast-Lite Head Only (3 pt) 2.3 mm, Qty 10

“

The recent integration with Varian allows our facility to set up patients with essentially no time added to our treatment workflow-while improving quality assurance with no manual entry. In addition to SRS, SRT and SBRT patient treatment, we also use the Protura system for our standard patient care, realizing the need to reduce rotational errors and improve setup accuracy for all IGRT treatment applications.

**Dr. Silvia Chiesa, MD, Radiation Oncology
Department at Università Cattolica Sacro Cuore
(UCSC) Policlinico A. Gemelli, Rome, Italy.**

”

Protura™ Robotic Patient Positioning System

Integrated, Accurate, Efficient

The Protura Robotic Patient Positioning System provides sub-millimeter positioning accuracy to reduce OAR dose and improve PTV dose accuracy.

Protura positions the patient with 6 degrees of freedom corrections from outside the treatment room and is the ideal solution for streamlining throughput and enabling more accurate treatments.

Contact CIVCO to learn more about the clinical benefits of Protura.



Protura™ Robotic Patient Positioning System



Compatible with Varian Trilogy® and Clinac® Series;
Elekta Infinity™, Synergy® and Versa HD™; Siemens TXT pedestals



Integrated

Adapts to most Linac pedestals
(see above for compatibility)

Linac system interfaces with Varian
and Elekta to automatically transfer all
6 shift values to Protura Software

Integrated with CIVCO's Universal
Couchtop™ Long Extension and
comprehensive motion management
solutions

Accurate

Assures precise patient alignment with
a built-in redundant sensor system

No external camera system is required

Dynamic pivot point assures all
rotations about isocenter

Sub-millimeter accuracy from advanced
robotic technology

Internal auto-calibration

Supports multiple coordinate systems
if needed

Efficient

Remote positioning, eliminating
need to re-enter the treatment
room to align patient

Stores historical data for easy
setup

In-room touch screen

Fast initialization, optimized to
handle rigors of a busy clinic

Powered via a standard outlet, no
battery to charge

Extensions to treat many disease sites

Protura features Universal Couchtop with seven Long Extension options to treat many disease sites.
See pages 6 – 8 for details on UCT LE.



- 1 Posifix Extension
(trUpoint ARCH™
SRS/SRT Immobilization)
- 2 Long Extensions
(Body Pro-Lok™
SBRT Immobilization)
- 3 Type-S and Posifix Extensions
(Head & Neck Positioning)



trUpoint
ARCH™

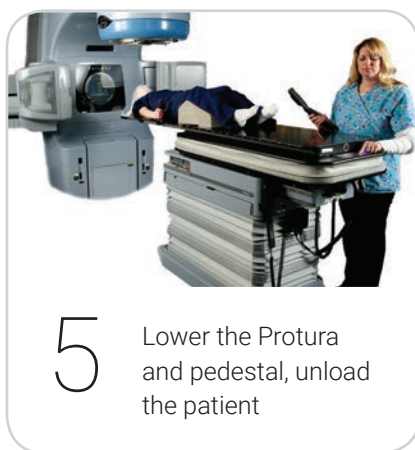


Body Pro-Lok ONE™
Body Pro-Lok™



Type-S™ & Posifix®

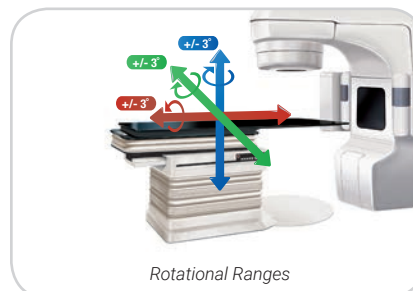
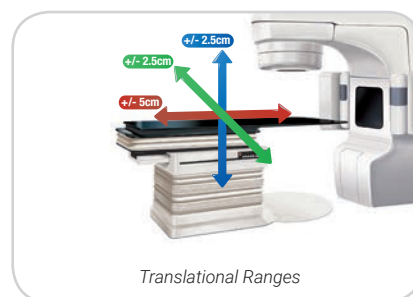
Protura™ Workflow



Technical Specifications

System Height	15 cm (5.9") in load position 20 cm (7.8") in treatment position
System Weight	90 kg (198 lbs)
Resolution	0.1 mm; 0.1°
Speed	Slow, Medium, Fast (up to 16 mm/second)
Maximum Patient Load	200 kg (440 lbs)

Contact CIVCO to learn more about the clinical benefits of Protura.



Head & Neck

Enhanced Positioning & Immobilization

There are three essential components to a head & neck system:

- Thermoplastic masks, providing positioning and immobilization from imaging through treatment
- Headrests, providing enhanced repositioning, accuracy and patient comfort
- Extensions, Baseplates or Overlays, providing the foundation for the system

Type-S™
Pages 32 – 39

Uni-frame®
Pages 40 – 44

Posifix®
Pages 45 – 50



Type-S™ Patient Positioning System

The Type-S system was designed for IMRT and conformal treatments and is intended to provide minimal attenuation throughout 360° of treatment angles. Type-S thermoplastics offer the greatest variety of IMRT patterns and materials, and the convenience of the continuous frame allows easier handling during setup. The Type-S system is fully compatible with Silverman headrests, the Customizable Head Support, Type-S Vac-Lok™ and can also be used with Posifix® headrests via an adapter.



Extensions & Variable Axis Baseplate



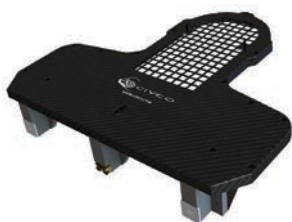
Universal Couchtop™
Long Extension

Universal Couchtop™ Long Extension

The Universal Couchtop Long Extension self-locks onto the Universal Couchtop, allowing the thermoplastic to connect to the couchtop.

See pages 6 – 8 for more info.

MTIL6665



Varian Style Extension

The Varian Style Extension hooks easily on the superior end of a Varian style endplate. An optional reloadable head, neck & shoulder frame for Type-S thermoplastics is available.

MTCFHNV



*Variable Axis
Baseplate with
Prone Face
Cushion*



*Patient Setup
with Variable
Axis Baseplate
and Prone Face
Cushion*



*Variable Axis
Baseplate with
optional Adapter
and Prone
Headrest*

Variable Axis Baseplate

The Variable Axis Baseplate integrates with any Type-S Baseplate to provide a tilting movement with patient fixation in either prone or supine positions. The unique variable axis design allows for natural head and neck movement during patient setup. The baseplate accommodates Type-S head-only thermoplastics and comes with the Prone Face Cushion (shown at left).

The Variable Axis Baseplate can accommodate the Prone Headrest (see page 56) with the use of the 301016 adapter plate (see page 57).

MTCFHNVAB01	Variable Axis Baseplate w/ Prone Face Cushion
MTPFC02	Prone Face Cushion
301025	Prone Headrest
301016	Prone Headrest Adapter

Overlays



iBEAM® Overlay Adapter

Created for the Medical Intelligence iBEAM and iBEAM EVO couchtops. The overlay is cantilevered, providing minimal attenuation in the area of treatment.

108073



Overlay Board

Extends off the end of the treatment couch and comes with an optional reloadable head, neck and shoulders frame for Type-S thermoplastics.

20CFHNSUB2	Overlay without Frame
MTCFHNC	Overlay w/ Carbon Fiber Frame
MTCFHNP	Overlay w/ ABS Frame



MRI Type-S™ Overlay

Made of fiberglass with a foam core for use in MR environments. The MRI Overlay is lightweight and three-pin indexable.

MTMRHNTYPES	
MTMRHNPN	Narrow



Fixator™ Shoulder Supression System

The Fixator Shoulder Supression System is designed to enhance the benefits of the Type-S system. The Fixator extends off the couchtop and includes adjustable padded positioners to gently cup the patient's shoulders, capturing and positioning them out of the treatment field. Indexed nomenclature allows for easily recorded shoulder repositioning. Type-S head-only IMRT Reinforced Thermoplastic™ masks are recommended for use with this system.

MTCFHN006	Fixator with Shoulder Cups (x2)
MTCFHN006SUB6	Shoulder Cup, Qty 1

Type-S™ & Uni-frame® Thermoplastics Overview

Type-S™ & Uni-frame®



Tranquility™ Series

Tranquility Series Thermoplastic Masks were designed with patient comfort and 3D tracking in mind. The masks feature unique patterns that offer a more open feel yet maintain rigidity and reproducibility.

FreedomView™

Pre-cut eye and mouth openings, increasing patient comfort and setup efficiency

ClearVision™

Open face mask designed to use with vision/camera systems

PureVision™

Open face mask designed to use with vision/camera systems; separate reinforcing thermoplastic strips included



ZENTEC™

ZENTEC Thermoplastics require less heating time than IMRT Reinforced Thermoplastics and have an established reputation of being highly conforming masks. In the 2.4 mm thickness, these masks provide a lighter feeling, which offers a more pleasant experience for anxious patients. In the 3.2 mm thickness, this material offers a similarly conforming mask with the added benefit of being CIVCO's most rigid continuous frame mask.



IMRT Reinforced Thermoplastics™

CIVCO's patented IMRT Reinforced Thermoplastics feature a combination of perforated and solid thermoplastic in the same mask to provide rigidity and secure immobilization for IMRT treatments. By providing solid bands in areas where a secure hold is essential while maintaining perforation elsewhere, these masks provide a balance of immobilization and comfort.



Standard Perforation

These thermoplastics feature standard perforation and are available in a variety of lengths and thicknesses.

Pediatric Masks

Narrower, reloadable thermoplastic frame and masks are available to accommodate pediatric patients.

Tranquility Series Thermoplastics

Tranquility Series Thermoplastic Masks were designed with patient comfort and 3D tracking in mind. The masks feature unique patterns that offer a more open feel yet maintain rigidity and reproducibility.



FreedomView™ IMRT Style 18

Pre-cut eye and mouth openings, increasing patient comfort and setup efficiency

MTAPUID1832CL	Head Only, 3.2 mm
MTAPUID1832CLRD	Head Only w/ 13" Radius Bottom, 3.2 mm



FreedomView IMRT Style 27

Pre-cut eye and mouth openings, increasing patient comfort and setup efficiency

MTAPSID27NR32CL	Head, Neck & Shoulders, 3.2 mm
-----------------	--------------------------------



ClearVision™

Open face mask designed to use with vision/camera systems

MTVRT20	Head Only, 3.2 mm
---------	-------------------



PureVision™

Open face mask designed to use with vision/camera systems; separate reinforcing thermoplastic strips included

MTVRTR	Head Only, Reloadable, 3.2 mm
--------	-------------------------------



Type-S™

Head & Neck

35

ZENTEC™ Thermoplastics

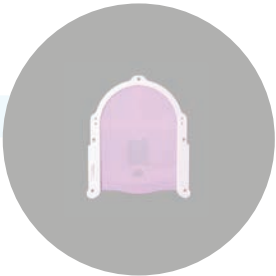
ZENTEC Thermoplastics require less heating time than IMRT Reinforced Thermoplastics™ and have an established reputation of being highly conforming masks. In the 2.4 mm thickness, these masks provide a lighter feeling, which offers a more pleasant experience for anxious patients. In the 3.2 mm thickness, this material offers a similarly conforming mask with the added benefit of being CIVCO's most rigid continuous frame mask.

Style 27 shown



ZENTEC IMRT Style 18

MTAPUID1824VT	Head Only, 2.4 mm
MTAPUID1832VT	Head Only, 3.2 mm



ZENTEC IMRT Style 27

MTAPSID2724VT	Head, Neck & Shoulders, 2.4 mm
MTAPSID2732VT	Head, Neck & Shoulders, 3.2 mm



For an even more customizable hold, see page 39 for Reinforcement Thermoplastic Strips.

IMRT Reinforced Thermoplastics™

Patented IMRT Reinforced Thermoplastics feature a combination of perforated and solid thermoplastic in the same mask to provide rigidity and secure immobilization for IMRT treatments. By providing solid bands in areas where a secure hold is essential while maintaining perforation elsewhere, these masks provide a balance of immobilization and comfort.

Style 27 with Neck Relief shown



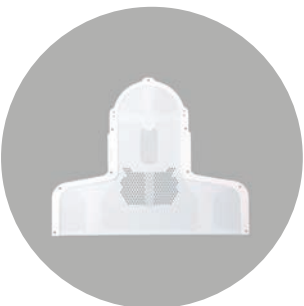
IMRT Style 18

MTAPUID1824	Head Only, 2.4 mm
MTAPUID1832	Head Only, 3.2 mm
MTAPUID181332RD	Head Only w/ 13" Radius Bottom, 3.2 mm



IMRT Style 27

MTAPSID2724	Head, Neck & Shoulders, 2.4 mm
MTAPSID2732	Head, Neck & Shoulders, 3.2 mm
MTAPSID27NR24	Head, Neck & Shoulders with Neck Relief, 2.4 mm
MTAPSID27NR32	Head, Neck & Shoulders with Neck Relief, 3.2 mm



See page 39 for additional styles.

Type-S™

Head & Neck

37

Standard Perforation Thermoplastics

These thermoplastics feature standard perforation and are available in a variety of lengths and thicknesses.



Standard Perforation

MTAPUD2.4	Head Only, 2.4 mm
MTAPUD	Head Only, 3.2 mm
MTAPSD2.4	Head, Neck & Shoulders, 2.4 mm
MTAPSD3.2	Head, Neck & Shoulders, 3.2 mm



Pediatric Masks

Narrower, reloadable thermoplastic frame and masks are available to accommodate pediatric patients.



Pediatric Reloadable Frame

20CFHNPSUB1P

Pediatric Standard Perforation

MTAPSP2.4	Head, Neck & Shoulders, 2.4 mm
-----------	--------------------------------

See page 39 for additional styles.

Additional Thermoplastics

IMRT

Style 18, Head Only, 12" Extended	3.2 mm	MTAPUID181232
Style 18, Head Only, 14" Extended	3.2 mm	MTAPUID181432
Style 20, Head Only	2.4 mm	MTAPUID2024
Style 20, Head Only	3.2 mm	MTAPUID2032
Style 22, Head Only	3.2 mm	MTAPUID2232
Style 29, Head Neck & Shoulders	2.4 mm	MTAPSID2924
Style 29, Head Neck & Shoulders	3.2 mm	MTAPSID2932
Style 29, Head Neck & Shoulders, Neck Relief	2.4 mm	MTAPSID29NR24
Style 29, Head Neck & Shoulders, Neck Relief	3.2 mm	MTAPSID29NR32

Reloadable IMRT

Style 18, Head Only	3.2 mm	MTAPUIR1832
Style 20, Head Only	3.2 mm	MTAPUIR2032
Style 22, Head Only	3.2 mm	MTAPUIR2232
Style 27, Head Neck & Shoulders	2.4 mm	MTAPSI2724
Style 27, Head Neck & Shoulders	3.2 mm	MTAPSI2732
Style 29, Head Neck & Shoulders	3.2 mm	MTAPSI2932
Style 29, Head Neck & Shoulders, Neck Relief	3.2 mm	MTAPSI29NR32

Standard Perforation

Head Only, 12" Extended	2.4 mm	MTAPUD1224
Head Only, 14" Extended	2.4 mm	MTAPUD1424

Solid w/ Perforated Nose

Head Only	2.4 mm	MTAPUD002
Head Neck & Shoulders	2.4 mm	MTAPSD001

Reloadable Standard Perforation

Head Only	3.2 mm	MTAPUR
Head Only, 12" Extended	2.4 mm	MTAPUR122.4
Head Only, 14" Extended	2.4 mm	MTAPUR142.4
Head Only	2.4 mm	MTAPUR2.4
Head Neck & Shoulders	2.4 mm	MTAPS2.4
Head Neck & Shoulders	3.2 mm	MTAPS3.2

Reinforcement Thermoplastic Strips (3.2 mm)

1.375 x 24" (3.5 x 70 cm)	Qty 1	MTAPS18391
1.375 x 9.75" (3.5 x 25 cm)	Qty 5	MTAPS25
1.375 x 13.75" (3.5 x 35 cm)	Qty 5	MTAPS35

Thermoplastic Pellets

3 lbs (1.36 kg)	MTAPS3A
-----------------	---------

Lead times for these masks vary; contact your sales representative.

All Type-S™ Thermoplastics are sold in packages of five.

See page 59 for Water Bath options.

See pages 52 – 57 for Type-S Headrest options.

All disposable thermoplastics are MRI compatible (reloadable carbon fiber frames are not MRI compatible).

Type-S™

Head & Neck

39

Uni-frame® Patient Positioning System

The Uni-frame system is an industry standard solution for head-only thermoplastics. Uni-frame masks are available in a variety of standard and IMRT patterns, including the Tranquility Series masks and the highly contouring ZENTEC™ material.

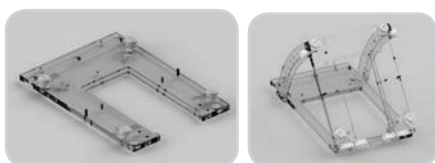


Baseplates



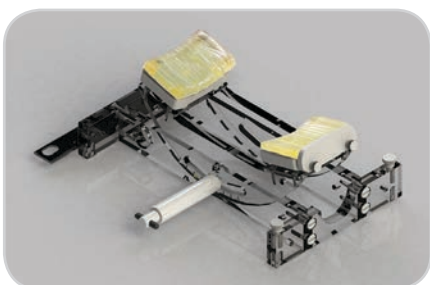
Carbon Fiber Baseplate

MT20100CF	Standard
MT20103CF	Tilting



Acrylic Baseplate MRSeries™

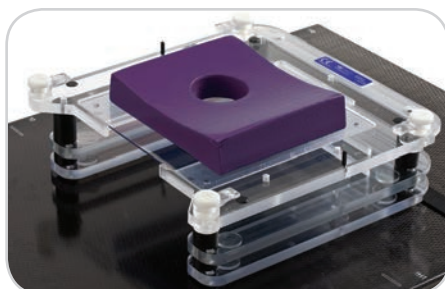
MT20100	Standard
MT20104	Tilting



Prone Head Holder

The Prone Head Holder features gel chin and forehead pads. This accessory unit integrates with the acrylic standard supine baseplate or the carbon fiber standard supine baseplate (MT20100, MT20100CF – see above) for patient fixation with a Uni-frame thermoplastic mask.

MT202



Lateral Baseplate

The Lateral Baseplate is specially padded for comfortable, reproducible lateral head & neck positioning. It accepts a special-width reloadable frame and thermoplastics and comes with a Lateral Head Cushion.

MTLTBP	Lateral Baseplate (includes lateral head cushion & reloadable frame)
MTLTBPIAT01	Lateral Head Cushion with Indexing Plate
MTLTBPIAT	Lateral Head Cushion
MTLTBP2	Reloadable Lateral Frame
MTAPUL	Perforated 3.2 mm Thermoplastic, Qty 5
MTAPUL2.4	Perforated 2.4 mm Thermoplastic, Qty 5

Tranquility™ Series Thermoplastics

Tranquility Series Thermoplastic Masks were designed with patient comfort and 3D tracking in mind. The masks feature unique patterns that offer a more open feel yet maintain rigidity and reproducibility.

ClearVision (Type-S shown)



FreedomView™ IMRT Style 18

Pre-cut eye and mouth openings, increasing patient comfort and setup efficiency

MTAPUI1832CL	Head Only, 3.2 mm
MTAPUIR1832CL	Head Only, Reloadable, 3.2 mm



ClearVision™

Open face mask designed to use with vision/camera systems

MTVRTW	Head Only, 3.2 mm
--------	-------------------



PureVision™

Open face mask designed for use with vision/camera systems; separate reinforcing thermoplastic strips included

MTVRTR	Head Only, Reloadable, 3.2 mm
--------	-------------------------------



For an even more customizable hold, see page 44 for Reinforcement Thermoplastic Strips.

ZENTEC™ Thermoplastics

ZENTEC Thermoplastics require less heating time than IMRT Reinforced Thermoplastics and have an established reputation of being highly conforming masks. In the 2.4 mm thickness, these masks provide a lighter feeling, which offers a more pleasant experience for anxious patients. In the 3.2 mm thickness, this material offers a similarly conforming mask with the added benefit of being CIVCO's most rigid continuous frame mask.

ZENTEC Style 18 (Type-S shown)



ZENTEC IMRT Style 18

MTAPUI1824VT	Head Only, 2.4 mm
MTAPUIW1824VT	Head Only, 2.4 mm, Wide
MTAPUIW1832VT	Head Only, 3.2 mm, Wide



IMRT Reinforced Thermoplastics™

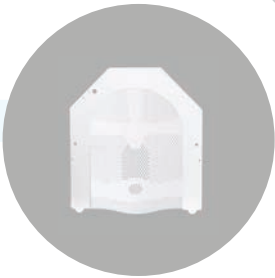
IMRT Reinforced Thermoplastics feature a combination of perforated and solid thermoplastics to provide rigidity and secure immobilization for IMRT treatments.

IMRT Reinforced Style 18 (Type-S shown)



IMRT Style 18

MTAPUI1824	Head Only, 2.4 mm
MTAPUI1832	Head Only, 3.2 mm



See page 44 for additional styles.

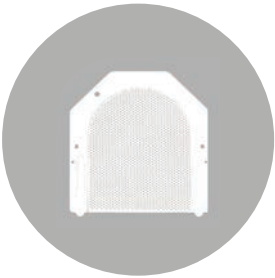
Standard Perforation Thermoplastics

These thermoplastics feature standard perforation and are available in a variety of lengths and thicknesses.



Standard Perforation

MTAPU2.4	Head Only, 2.4 mm
MTAPU	Head Only, 3.2 mm
MTAPUW2.4	Head Only, 2.4 mm, Wide
MTAPUW	Head Only, 3.2 mm, Wide



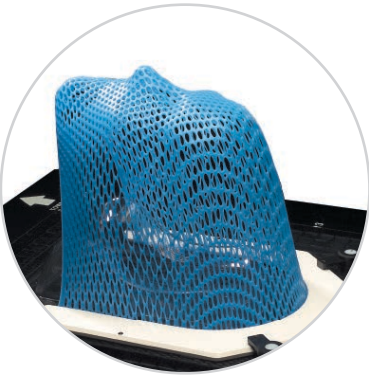
Uni-frame®

Head & Neck

43

Pediatric Thermoplastics

Colored Uni-frame thermoplastic masks are available in blue with standard perforation.



Disposable Uni-frame

MTAPUNB	Head Only, 3.2 mm
---------	-------------------

Additional Thermoplastics

IMRT

IMRT Style 20, 2.4 mm	MTAPUI2024
IMRT Style 20, 3.2 mm	MTAPUI2032
IMRT Style 22, 3.2 mm	MTAPUI2232

Standard Perforation

1.6 mm	MTAPU1.6
12" Extended, 2.4 mm	MTAPU122.4
12" Extended, 3.2 mm	MTAPU12
Wide, 12" Extended, 2.4 mm	MTAPUW122.4
14" Extended, 2.4 mm	MTAPU142.4
14" Extended, 3.2 mm	MTAPU14

ComfortPerf Pattern

2.4 mm	MTAPUCP201
3.2 mm	MTAPUCP301

Reinforcement Thermoplastic Strips (3.2 mm)

1.375 x 24" (3.5 x 70 cm)	Qty 1	MTAPS18391
1.375 x 9.75" (3.5 x 25 cm)	Qty 5	MTAPS25
1.375 x 13.75" (3.5 x 35 cm)	Qty 5	MTAPS35

Thermoplastic Pellets

3 lbs (1.36 kg)	MTAPS3A
-----------------	---------

Lead times for these masks vary; contact your CIVCO representative.

All Uni-frame Thermoplastics are sold in packages of five.

See page 59 for Water Bath options.

See pages 53 – 57 for Uni-frame Headrest options.

All disposable thermoplastics are MRI compatible (reloadable carbon fiber frames are not MRI compatible).

Posifix® Patient Positioning System

The Posifix system works with the Posicast® and Mastercast™ Pro lines of thermoplastics and the trUpoint ARCH™ SRS/SRT System. Posicast and Mastercast Pro thermoplastics are designed to drape over the patient, offering a very conformal fit. A wide variety of Posifix headrests are designed specifically for this system, along with the Individual Head Support.



Extensions



trUpoint⁺
ARCH™

Universal Couchtop™
Long Extension

Universal Couchtop™ Long Extension

The Universal Couchtop Long Extension self-locks onto the Universal Couchtop, allowing the thermoplastic to connect to the couchtop.

See pages 6 – 8 for more info.

MTIL6668

trUpoint ARCH™ SRS/SRT System compatible

MTIL6666



trUpoint⁺
ARCH™

Varian Style Extension

The Varian Style Extension hooks easily on the superior end of the Varian style endplate. Like the Universal Couchtop extensions, this extension allows for 360° treatment of the head and neck with minimal attenuation.

108020

trUpoint ARCH SRS/SRT System compatible

108010

Varian Exact compatible

Posifix®

Head & Neck

45

Baseplates



trUpoint⁺
ARCH[®]

iBEAM[®] Overlay Adapter

Created for the Medical Intelligence iBEAM and iBEAM EVO couchtops. The overlay is cantilevered, providing minimal attenuation in the area of treatment.

108072

trUpoint ARCH[™] SRS/SRT System compatible



trUpoint⁺
ARCH[®]

Head, Neck & Shoulders Baseplates

Carbon fiber or Acrylic Posifix baseplates for head-only and head, neck and shoulder fixation. A narrow, acrylic version is available for smaller bore MRI and CT machines.

102021

Posifix[®]-2 Baseplate, Carbon Fiber

101019

Posifix-1 Baseplate, Acrylic
trUpoint ARCH SRS/SRT System compatible

101025

Posifix-1 Baseplate Narrow, Acrylic

Acrylic Baseplates

 MRSeries[™]



Head-Only Baseplates

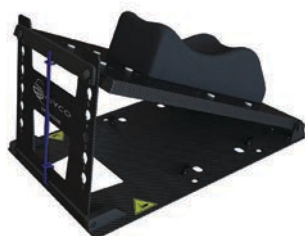
Carbon fiber or Acrylic Posifix baseplates for head-only fixation.

104021

Posifix-4 Baseplate, Carbon Fiber

105021

Posifix-5 Acrylic Baseplate



Positilt[™]

Made of low-density foam covered with ultra-thin layers of carbon fiber, the Positilt enables the head to be positioned at six angles towards the couchtop plane. Positilt can be easily attached to all Posifix baseplates, including the IMRT Baseplates.

107020

Mastercast™ Pro Thermoplastics

Mastercast Pro is the premier thermoplastic for the Posifix family of positioning and immobilization products. Mastercast Pro is a drape-style mask requiring less stretching, therefore resulting in minimal shrinkage after cooling. Mastercast Pro offers increased rigidity over Posicast® thermoplastics.

Mastercast Pro PR3 shown



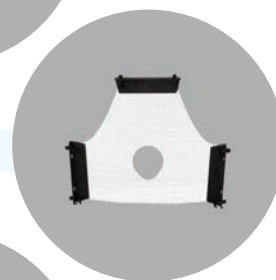
Mastercast Pro PR3

990030 Head Only (3 pt), 2.3 mm



Mastercast Pro PR31

990031 Head Only (3 pt) with Open-face, 2.3 mm



Mastercast Pro PR44

990044 Head Only (3 pt) with Larynx Extension, 2.3 mm



Mastercast Pro PR45

990045 Head Only (3 pt) with Open-face and Larynx Extension, 2.3 mm



Mastercast Pro PR5

990145 Head, Neck & Shoulders (5 pt), 2.3 mm



Mastercast Pro PR51

991145 Head, Neck & Shoulders (5 pt) with Open-face, 2.3 mm



Posifix®

Head & Neck

47

Posicast®-Lite Thermoplastics

Posicast-Lite is a drape-style mask that feels like a traditional thermoplastic with a smooth spray coating on both sides of the mask.

Posicast-Lite PR31 shown



Posicast-Lite PR3

772030 Head Only (3 pt), 2.3 mm



Posicast-Lite PR31

trUpoint ARCH™ SRS/SRT System compatible

970031 Head Only (3 pt) with Open-face, 2.3 mm

trUpoint⁺
ARCH™



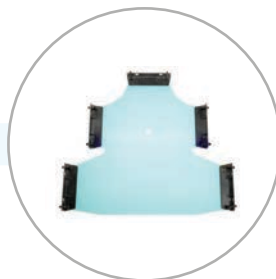
Posicast-Lite PR44

772044 Head Only (3 pt) with Larynx Extension, 2.3 mm



Posicast-Lite PR5

772145 Head, Neck & Shoulders (5 pt), 2.3 mm



See page 50 for additional styles.

Posicast®-Plus Thermoplastics

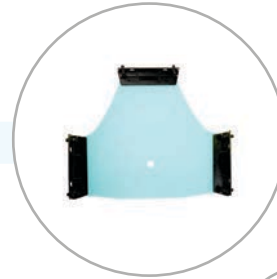
Posicast-Plus is a drape-style mask that has a soft polyurethane coating on the patient-contacting side for comfort, while the other side features a smooth spray coating to facilitate marking treatment fields on the mask.

Posicast-Plus PR5 shown



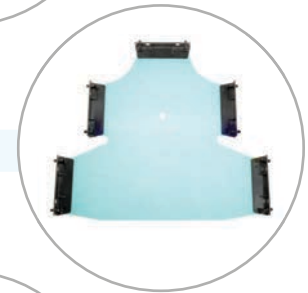
Posicast-Plus PR3

930030 Head Only (3 pt), 2.3 mm



Posicast-Plus PR5

930145 Head, Neck & Shoulders (5 pt), 2.3 mm



Posicast-Plus PR44

930044 Head Only (3 pt) with Larynx Extension, 2.3 mm



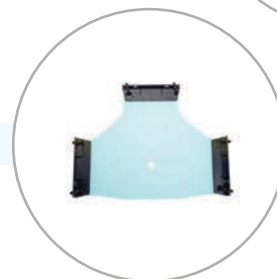
Posicast-Plus PR55, Pediatric

930055 Head, Neck & Shoulders (5 pt), 2.3 mm



Posicast-Plus PR33, Pediatric

930033 Head Only (3 pt), 2.3 mm



Posifix®

Head & Neck

49

Additional Thermoplastics

Posicast® Multiperfo 2.3 mm

PR3 Head-Only (3 pt)	940030
PR5 Head, Neck & Shoulder (5 pt)	940145

Reloadable Posicast Multiperfo 2.3 mm

PR3 Head-Only (3 pt)	900030
PR5 Head, Neck & Shoulder (5 pt)	900145

Reloadable Posicast Microperfo 2.3 mm

PR3 Head-Only (3 pt)	910030
PR44 Head-Only Larynx Extension (3 pt)	910044
PR5 Head, Neck & Shoulder (5 pt)	910145

Reloadable Posicast-Plus 2.3 mm

PR3 Head-Only (3 pt)	920030
PR33 Head-Only Pediatric (3 pt)	920033
PR44 Head-Only Larynx Extension (3 pt)	920044
PR5 Head, Neck & Shoulder (5 pt)	920145

Reloadable Posicast-Lite 2.3 mm

PR3 Head-Only (3 pt)	770030
PR33 Head-Only Pediatric (3 pt)	770033
PR44 Head-Only Larynx Extension (3 pt)	770044
PR5 Head, Neck & Shoulder (5 pt)	770145

Lead times for these masks vary; contact your CIVCO representative.

All Posicast Thermoplastics are sold in packages of ten.

See page 59 for Water Bath options.

See pages 52 – 57 for Posifix Headrest options.

All disposable thermoplastics are MRI compatible (reloadable carbon fiber frames are not MRI compatible).



Reusable L-Profiles

Reusable L-profile required for use with all Posicast precuts without L-profiles.

622510	Set of 10
--------	-----------

Posicast Microperfo Plate

43 x 92 cm, 2.3 mm thick, Box of 10



904392	Large (multi) perforation, fuzzy coating on both sides
914392	Micro perforation, fuzzy coating on both sides
924392	Micro perforation, fuzzy coating on one side

Precise Bite™

The Precise Bite attaches easily to a thermoplastic cast and conforms to the teeth and/or maxilla to aid in effective and repeatable positioning. The Precise Bite with tongue depressor assists in tongue displacement and provides an airway opening for easy breathing.

- Softens in warm water and comfortably conforms to the patient's dental contours
- Precise Bite docking plate simply snaps on top to secure the bite to the thermoplastic mask
- Compatible with Uni-frame®, Type-S™ and Posicast® thermoplastics
- Warmer softens Precise Bite without a microwave or water bath

MTCBPBITE Standard, Qty 5

MTCBPBITES Small, Qty 5

MTCBPBITETD w/ Tongue Depressor, Qty 5

MTCBPBITETDS Small with Tongue Depressor, Qty 5

MTCBPBITEWRM Warmer, 110 volt

WARMER HAS NOT BEEN CE MARKED

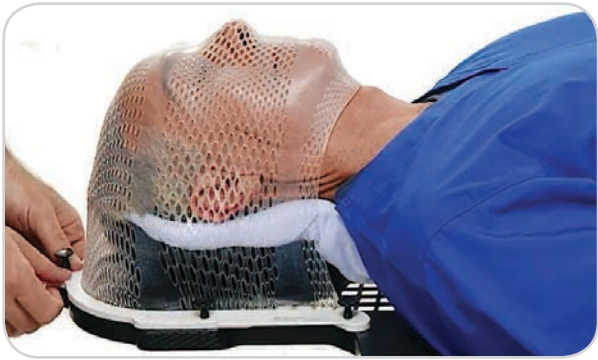


Customizable Head Support



The Customizable Head Support is a shell and cushion system. The shell may be used with any customizable cushion. The unique shape of the shell was designed to encourage the cushion to return the patient to a repeatable position from fraction to fraction.

- Allows more support under patient's neck for less superior-inferior movement (pitch)
- Provides enhanced comfort so patient is less likely to move during treatment
- Shell provides several unique contours to guide the cushion into the same position for each fraction
- Two small pins centered inside the shell provide fixed, repeatable points while preventing the cushion from moving
- Deep "bowl" shape provides a deeper head capture than using a cushion alone or standard head supports



CHS01	Posifix®
CHS02	Type-S™
MTACL2035HF	20 x 35 cm Chamfered AccuForm™, 1/2 Fill
MTACL2035	20 x 35 cm Chamfered AccuForm



Shown with
20 x 35 cm AccuForm

AccuForm™ Cushions



AccuForm Cushions are ideal for high-precision head and neck treatments when enhanced comfort, stability and repositioning accuracy are key.

- Soft, cloth-covered pillow contains tiny beads coated in water-curable resin
- Cushion becomes pliable when sprayed with water, allowing formation around patient's contours, including custom pitch and rise
- Cushion forms a rigid, comfortable custom mold when dry
- Single patient use
- 15 x 20 cm cushion recommended when customized fit is needed on a standard headrest
- 20 x 25 cm, 20 x 45 cm and Type-S™ cushions can be used as stand-alone cushions
- 20 x 35 cm chamfered cushion features clipped cushion corners that provide support without interfering with the thermoplastic

MTACL1520	15 x 20 cm AccuForm
MTACL14242	20 x 25 cm AccuForm
MTACL2035	20 x 35 cm Chamfered
MTACL2035HF	20 x 35 cm Chamfered Half Fill
MTACL2045	20 x 45 cm AccuForm
MTACLTYPES1	Type-S AccuForm
MTACL4060	40 x 60 cm AccuForm
MTACL6060	60 x 60 cm AccuForm



15 x 20 AccuForm



20 x 25 AccuForm



Type-S AccuForm

AccuForm Positioner

An AccuForm Positioner can be used for indexing an AccuForm cushion to Uni-frame® and Type-S baseplates.

MTACL001	AccuForm Positioner
----------	---------------------



Individual Head Support

The Individual Head Support provides customized head and neck positioning during radiation therapy treatment and diagnostic procedures. This head support assists in maximizing fixation, stability and comfort while minimizing longitudinal, lateral and rotational movement of the patient.

- Made from a specially shaped impression foam combined with fabric-coated thermoplastic
- Gives clinicians the power to customize position and support to each patient
- Can be used with traditional thermoplastic masks, as well as more rigid head frames to deliver stereotactic radiation therapy and radiosurgery
- Available for use with the Type-S™ or Posifix® baseplates

MTIHS03	Type-S Normal
MTIHS01	Posifix Normal
MTIHS02	Posifix, Hyperextension



Head & Neck MRSeries™ Vac-Lok™ Cushions

Vac-Lok cushions provide comfortable support of the head and neck as well as the upper shoulders.

- Offers patient-specific conformity and is reusable
- Tiny polystyrene bead filling creates a more rigid formation when deflated by vacuum
- Available in a variety of shapes and sizes in two durable finishes: polyurethane or nylon
- Nylon Type-S cushion is available in two sizes and is indexable

MTVL37	50 x 70 cm "T" Vac-Lok Cushion
MTVLTYS01CX	Type-S Vac-Lok Cushion (short)
MTVLTYS02CX	Type-S Long Vac-Lok Cushion (long)



Headrests

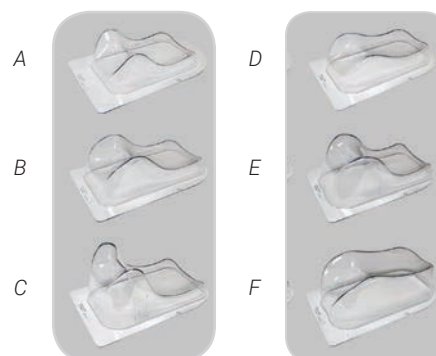
Headrests provide enhanced repositioning, accuracy and patient comfort. Select headrests are compatible with our three head & neck patient positioning systems directly or via an adapter.

Headrest shape may have slight variations; the same headrest should be used for a patient throughout setup and treatment cycle. Contact your sales representative for more information on compatibility.

Silverman Headrests¹

With a Silverman, no transmission correction is necessary for most high-energy beams. Silverman headrests can be purchased individually or in a set of six.

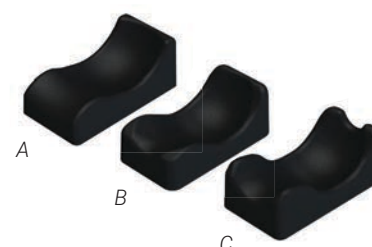
MTSILVER2A	A	MTSILVER2D	D
MTSILVER2B	B	MTSILVER2E	E
MTSILVER2C	C	MTSILVER2F	F
MTSILVER2	Set of six		



Extended Head Stop Headrests²

The Extended Head Stop Headrests help encourage patients to return closer to the same position from treatment to treatment by providing a cranial stop as a reference for where to place their head.

301030	A - Large	301033	C - Small
301032	B - Medium	301034	Set of three

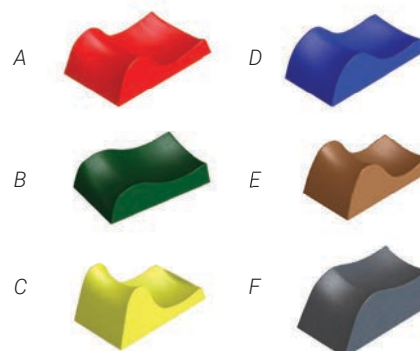


Timo Headrests³

Timo headrests are constructed of durable polyurethane foam with a washable coating. Six various heights and contours offer a comprehensive range of neck angulations. They are available plain or with Lexan plates for use with Uni-frame® baseplates and Wing Boards™.

Add "L" to any part number to add Lexan Plate.

MTTIMOA	A - Red	MTTIMOD	D - Blue
MTTIMOB	B - Green	MTTIMOE	E - Brown
MTTIMOC	C - Yellow	MTTIMOF	F - Gray
MTTIMO	Set of six		
		MTTIMOL	Set of six w/ Lexan Plates



- 1 Compatible with Uni-frame Baseplates, Type-S™ Baseplates, Standard and Extended Wing Boards.
- 2 Compatible with Posifix®, Positilt™, and Posirest™ Baseplates and the C-Qual™ Breastboard.
Compatible with Uni-frame Baseplates and the Variable Axis Baseplate via the Adapter Cushion 301016 (see page 57).
Compatible with Type-S Baseplates and Wing Boards via the Posi-S Adapter (see page 57).
- 3 Compatible with: Uni-frame baseplates, Variable Axis Baseplate, all Wing Boards, and the MT-350 Breastboard with a special adapter plate.

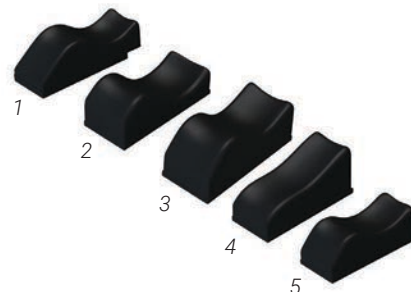
Headrests

Headrest shape may have slight variations; the same headrest should be used for a patient throughout setup and treatment cycle. Contact your sales representative for more information on compatibility.

Posifix® Supine Headrests²

Posifix headrests are made of low density polyethylene foam.

301001	1 - Similar to #5 with patient shift in superior direction
301004BLK	2 - Hyperextended
301003BLK	3 - Slightly hyperextended
301005BLK	4 - Chin down toward chest
301002BLK	5 - Natural position
305000BLK	Set of five



Posifix Contoured Headrests²

The Posifix Contoured Headrests are offered in the same curvature as the standard Posifix Supine Headrests and feature colored bottoms for easy identification. They are wider and higher and completely surround the back of the head. This design is intended to encourage less lateral, longitudinal and rotational movement during setup and treatment.

301023	Yellow bottom - Natural position
301024	White bottom - Hyperextended
301022	Orange bottom - Chin down toward chest
301234	Set of three



Posifix Wide Headrest

Compatible with C-Qual™ and Posiboard™-2 Breastboards, Posirest & Thorawedge.

301008



Posifix Prone Headrest²

The Prone Headrest is specially designed for treatments with the patient in the prone position. The 3-D shaped contour supports chin and forehead and therefore assists in creating a reproducible and comfortable position.

301025



Posifix Pediatric Headrests

Designed for use with pediatric patients, both the prone and supine headrests are available in bright, glossy colors.

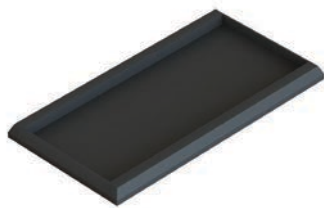
301026	Supine ³
301027	Prone ⁴



2,3 See notation on page 55.

4 Compatible with all Posifix Baseplates as well as Uni-frame® baseplates and the Variable Axis Baseplate using an Adapter Cushion 301016 or Posi-S Adapter (see page 57). Compatible with Type-S™ baseplates via the Posi-S Adapter (see page 57).

Adapters



Headrest Adapter MRSeries™

The use of headrests from the Posifix® line is not limited to use with the Posifix positioning system. An adapter is available, enabling these headrests to fit all Uniframe® Baseplates and the Variable Axis Baseplate.

Contact your sales representative to verify compatibility.

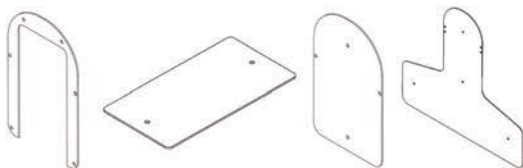
301016



MRI Posi-S Adapter MRSeries™

The MRI Posi-S Adapter provides a solution for utilizing any Posifix headrest on Type-S™ Baseplates, the Variable Axis Baseplate, Uni-frame baseplates and Wing Boards™. This adapter is made of acrylic.

301029



Shims

Shims for use with CIVCO's headrests and systems are available.

MTSHIMS	Silverman
MTSHIMT	Timo
MTSHIM01	Type-S Head-Only
MTSHIM01S	Type-S Head, Neck & Shoulders

Shoulder Retractor

The Shoulder Retractor is often used with thermoplastic-based fixation systems. Retraction is especially beneficial for shoulder clearance when opposing lateral fields are used to treat the neck.

- Constructed of durable plastic with a large footboard and nylon tension ropes with ball-in-socket locking, allowing for selectable tension in 1/2" increments
- Available with Handle Grips, Sherpa Wrist Loops or washable Nylon Wrist Loops

MTSR01	Retractor with Handle Grip (bottom photo)
MTSR02	Retractor with Sherpa Wrist Loops (top photo)
MTSR03	Retractor with Sherpa & Nylon Wrist Loops

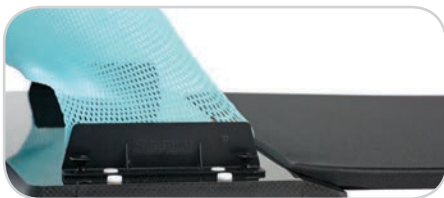


Couchtop Cover MRSeries™

The Couchtop Cover is a comfortable elevation mat that matches the slope of the Posifix® or Posirest™ Baseplate for a seamless transition.

- Cover is the same thickness (1.5 cm) as the Posifix and Posirest baseplates
- Available in 120 and 46 cm lengths
- Handle for convenient carrying and hanging

301090	120 x 46 cm
301091	46 x 46 cm



Water Baths

Contact your sales representative for country compatibility.



Digital Water Bath

The Digital Water Bath accommodates all thermoplastic sizes including Type-S™ head, neck and shoulders and HipFix® thermoplastics.

Dimensions (W x D x H)*

Overall: 33.71 x 25.86 x 8.02" (85.6 x 65.7 x 20.4 cm)

Internal: 26 x 22 x 5" (66 x 55.9 x 12.7 cm)

MTCD1600	110V
----------	------

MTCD1600EX	220V
------------	------



Water Bath

The Water Bath accommodates all thermoplastic sizes including Type-S head, neck and shoulders and HipFix thermoplastics.

Dimensions (W x D x H)*

Overall: 28 x 22 x 12.65" (71.1 x 55.9 x 32.1 cm)

Internal: 25 x 19 x 5" (63.5 x 48.3 x 12.7 cm)

MTRH1500	120V
----------	------

MTRH1500EX	230V
------------	------



Commercial Water Bath

The Commercial Water Bath accommodates Uni-frame®, Type-S head-only masks and Posicast® head-only masks.

Dimensions (W x D x H)

Overall: 14.5 x 22.5 x 9" (36.8 x 57.2 x 22.9 cm)

Internal: 12 x 20 x 6.25" (30.3 x 50.6 x 15.9 cm)

MTAPWW3V	120V
----------	------

MTAPWW3VEX	230V
------------	------



Water Bath Cart

The Water Bath Cart provides an easy, efficient way to transfer a water bath between treatment rooms. Load capacity 500 lbs.

Dimensions (W x D x H - height includes handle)

Overall: 25.5 x 43 x 38" (64.8 x 109.2 x 96.5 cm)

MTMC01003

Pan Liner

The pan liner helps prevent thermoplastics from sticking to the bottom of the water bath.

MTCBPLLG	Large, Qty 2
----------	--------------

*Dimensions do not include shut off valve mounted on side.

Storage Systems

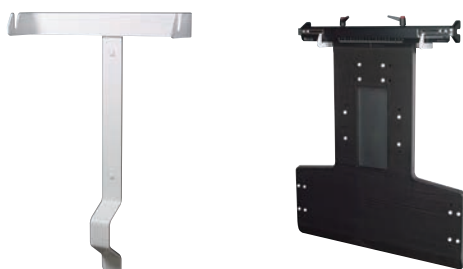


Two-Pin Baseplate Storage

Compatible with:

- Two-pin Posifix and Posirest baseplates
- Most other two-pin ready baseplates

013159



Posifix® & Posirest® Baseplate Storage

Compatible with:

- Posifix and Posirest baseplates with attached aluminum rails

013101



Varian Style Extension Storage

Compatible with:

- 108010 and 108020 Varian Style Extensions

See page 45 for more information.

013106



Headrest Storage

Convenient wall rack for storing headrests

Compatible with:

- Posifix headrests and wedges
- Silverman
- Timo

013107

“

The C-Qual M™ is easy to transport and set up and is reproducible, making it very user-friendly for our therapists. Our patients have also commented on the comfort of C-Qual M. We are very pleased with CIVCO products and believe our patients will benefit from their value.

**Pam Golliday, Lead Therapist,
Center for Cancer and Blood Disorders,
Fort Worth, Texas**

”

Breast & Thorax

Accurate, Reproducible, Comfortable

Patient positioning and immobilization for treatment of the thorax, abdomen and breast range from simple positioning devices to mechanical, raised arm systems — all designed to improve accuracy, reproducibility and patient comfort. Our breast and thorax solutions include prone and supine breastboard options, Monarch™ Overhead Arm Positioner and Wing Boards™.



C-Qual M™ with Monarch™ Overhead Arm Positioner

The innovative C-Qual M Breastboard brings a new level of patient comfort and diagnostic compatibility to CIVCO's breast and thorax positioning solutions. Integration with the Monarch Overhead Arm Positioner provides a new, efficient approach for arms-up positioning, allowing proper superior/inferior adjustment of the board to the patient, helping reduce patient slide.

- Adjustable Monarch Overhead Arm Positioner provides increased positioning options for patients of varied torso lengths
- Contoured cutouts in shoulder region help reduce attenuation during posterior axillary boosts
- Dual function hand grips allow for enhanced wrist comfort and increased positioning options
- Easy on/off latch system of the Monarch Overhead Arm Positioner eliminates need for tools to make adjustments
- Optical Surface Monitoring System (OSMS) compatible
- Elevation Supports secure angles from 5 to 25° with nine different tilt positions (see photos bottom left)
- Compatible with Posicast® Head-Only Thermoplastics and Breast Support Thermoplastics, Posifix® Headrests and Vac-Lok™ Cushions



 **C-Qual M™**
Breastboard

 **Monarch™**
Overhead Arm Positioner

MTM400 C-Qual M with Monarch
013156 Wall Storage Device



Elevation Supports



Monarch™ Overhead Arm Positioner

The Monarch Overhead Arm Positioner is 23.4" (59 cm) wide and features dual function hand grips that allow for natural flexion of the patient's wrists while providing increased positioning options for the clinician.

- Matches body contours for optimal arm support and patient comfort
- Indexable for easy stand-alone use

 **Monarch™**
Overhead Arm Positioner

 **MRSeries™**



OAP110

Monarch (for use with Lok-Bar™)



Monarch used with Body Pro-Lok ONE™ setup

C-Qual™ Breastboard

The carbon fiber C-Qual Breastboard is lightweight, designed for patient comfort and features a low-attenuating IGRT treatment zone. The C-Qual's advanced features bring efficiencies to breast setup and treatment.

- Low-attenuating IGRT treatment zone
- Elevation Supports secure angles from 5 to 25° with nine different tilt positions (see photos bottom right)
- Advanced arm supports, with no interference in the supraclavicular region
- Compatible with the Monarch™ Overhead Arm Positioner
- Compatible with Posicast® Head & Neck Thermoplastics and Breast Support Thermoplastics
- Special wide headrest included

MT401	C-Qual with Monarch
MT400	C-Qual with Arm & Wrist Supports
OAP100	Monarch (upgrade kit for MT400)
013156	Wall Storage Device

The C-Qual is compatible with PR33, PR3 and PR44 Head & Neck Posicast Thermoplastics; see pages 47 – 50 for more information. See pages 55 – 56 for information on compatible headrests.



Featuring Monarch Overhead Arm Positioner



Featuring Arm & Wrist Supports



Elevation Supports

New Horizon™ Prone Breastboard



The New Horizon Prone Breastboard assists in providing accessible, comfortable and reproducible patient positioning for prone breast treatments. The modular design and variety of accessories provide options for many prone breast setup challenges, allowing customized patient setups and meeting clinical needs for treatment.

- Solid and open contralateral wedges provided to meet individual patient needs
- Patient-friendly design, with contoured foam and an adjustable massage-style face cushion
- Indexable to the couchtop, assuring its orientation to lasers and isocenter is repeatable and known
- Scale rulers allow for easy verification of the longitudinal and lateral position of the patient
- Overall height can be adjusted through the use of 3 cm spacers
- Reversible breast section allows for treatment of either breast with a simple 180° turn
- Three simple-to-separate parts allow for a lighter board and easier storage and transport between treatment rooms
- The unique curved board rises to meet the patient halfway for less climbing and safe positioning (see photo to right)



MTHPBB01	New Horizon
MTHPBB01K	New Horizon with Type 1B Bridge and Clam-Lok™ Cushion
MTHPBB103	Head Cushion Covers, Qty 50



MT-350

The carbon fiber MT-350 Breastboard combines reproducible breast positioning with efficient, comfortable patient setups. Its lightweight construction provides ease-of-use with repeatable support.

- Grid treatment panels provide rigid, low-attenuating support
- Positive locking system offers angles in 2.5° increments from 0 to 20° and an angle of 25°
- Indexable hip stop prevents patients from sliding
- Wide variety of arm supports and headrest accessories available separately (see page 67)
- Compatible with Standard, Extended and Tapered Wing Boards™ and Breast Support Thermoplastics

MT350N	MT-350 with Round Head Cup and Hip Stop
MT350WSD	Wall Storage Device



Featuring Arm & Wrist Supports



Thorawedge™

The Thorawedge is a unique positioning device allowing the patient to incline at multiple fixed angles, creating a comfortable position during diagnostic procedures.

The Thorawedge was co-developed with the Department of Radiotherapy of the University Medical Center in Utrecht, The Netherlands.

- Consists of two wedges (5 and 10°) and a comfortable arm support
- Wedges can be used separately or combined to reach a 15° angle. Additional 5° wedges can be added to form 20 and 25° angles
- Headrest and lumbar support can be indexed, assuring a reproducible patient position throughout the course of treatment
- Large side cut-outs allow for a full range of treatment angles

301080	Thorawedge
301081	Additional 5° Wedge
301082	Additional 10° Wedge



MT-350 Accessories



Bi-Axial Arm Support System™

The Bi-Axial Arm Support System consists of both an arm and wrist support for comfortable and reproducible positioning for the upper and lower arm. The padded supports index to a variety of reproducible positions.

Purple arm and wrist supports differ from the previous blue supports. Please contact your sales representative for additional information.

MTTAS2R Right Arm Support

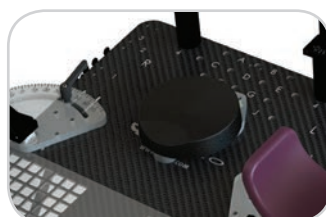
MTTAS2L Left Arm Support

MTTWS2S Wrist Support



Wing Boards™

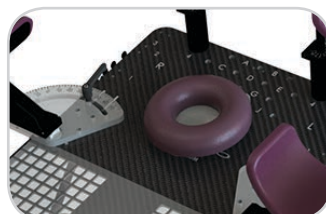
The Extended, Standard and Tapered Wing Boards can be mounted to the MT-350 Breastboard for additional arm support. See page 70 for more information on Wing Boards.



Round Head Cup

The vinyl covered foam round head cup comes standard on the MT-350 Breastboard. It indexes to any of the numbered positions on the top of the breastboards.

MT250SUB11



Gel Head Cup

The doughnut-shaped gel head cup provides enhanced patient comfort. It features a baseplate that indexes to any of the numbered positions on the top of the breastboards.

MT250SUB10



Timo Headrest Adapter Plate

Timo Headrests are constructed of durable polyurethane foam with a washable coating. Three various heights and contours offer a range of neck angulations. An adapter is available to provide compatibility with the MT-350.

See page 55 for more information on Timo Headrests.

MT350400



Delrin Hand Grips

Delrin Hand Grips provide an affordable option for quick patient setups for overhead arm positioning.

MT2504

Posiboard™-2

The Posiboard-2 Breastboard is a complete solution for the positioning of breast patients, delivering the perfect balance of feature and function.

- Low density foam core allows beam to pass through at any angle with minimal attenuation
- Can be positioned at eight angles, accommodates several adjustable arm support options
- Wall-mount plate available for wall storage

109030 Posiboard-2 with Wide Headrest, Cranial Arm Support, Rigid Adjustable Arm Supports (x2), Couchtop Fixation and Indexable Bottom Stop

013165 Posiboard Storage Holder



Posirest™-2

The Posirest-2 Arm Support is designed to create proper and comfortable upper extremity positioning.

- Kits include: Posirest Carbon Fiber Baseplate, Wide Headrest, High Arm Support, Cranial Arm Support and Adjustable Arm Supports (x2)
- Arm supports can be adjusted in several positions and are fitted with comfortable padding
- High Arm Support allows patients who cannot reach back to rest their arms overhead

106521 Posirest-2 w/ Standard Arm Supports

106522 Posirest-2 w/ Large Arm Supports



Cranial Arm Support



High Arm Support

Posiboard™-2 and Posirest™-2 Accessories



Rigid Adjustable Arm Supports

Rigid Adjustable Arm Supports have fixed heights perfect for use with the cranial arm support. The comfortable padded arm cup is rotatable and supports the upper arm regardless of which of the five different angle settings is used. For larger patients, this arm support is available with a large arm cup.

106020	Standard, Qty 2 (included with 109030)
106048	Large, Qty 2



Height Adjustable Arm Supports

Height Adjustable Arm Supports feature rotatable arm cups and three indexable height options for added patient comfort.

106025	Standard, Qty 2
--------	-----------------



Cranial Arm Support

A comfortable position of the forearms is achieved with a cranial arm support. It can be combined with the Rigid Adjustable Upper Arm Support to provide a complete arm support system.

106024



Wide Headrest

Both the C-Qual™ and Posiboard-2 Breastboards come with a special, wide headrest.

301008



Standard Wing Board

The Standard Wing Board is 22.5" (57 cm) wide, constructed of durable, lightweight ABS and features Delrin post hand grips. It is CT compatible and indexable for enhanced reproducibility from imaging through treatment. It easily attaches to the MT-350 breastboard.

MTWB09



Tapered Wing Board

The Tapered Wing Board is 22" (56 cm) wide and has angled wings, providing patient comfort and support. Its narrow profile is ideal for CT and PET bores. It is available with a T- or U-Grip Handle. It easily attaches to the MT-350 breastboard.

MTWB10T w/ T-Grip

MTWB10U w/ U-Grip



Extended Wing Board

The Extended Wing Board is 22.5" (57 cm) wide, constructed of durable, lightweight ABS and can be used with a T- or U-Grip handle. Its extended length allows for additional arm positioning flexibility. It is CT compatible and indexable for enhanced reproducibility from imaging through treatment. It easily attaches to the MT-350 breastboard.

MTWB08T w/ T-Grip

MTWB08U w/ U-Grip

Additional Grip Options

Both the T-Grip and the U-Grip are available individually. Compatible with the Extended and Tapered Wing Boards.

MTGBSUB1 w/ T-Grip

MTGBSUB3 w/ U-Grip

See pages 55 & 56 for compatible headrest options.

Breast Support Thermoplastic

Thermoplastic breast positioning is primarily intended to hold the breast up and away from the chest wall, reducing both skin folds and unwanted radiation dose into the patient’s lung and heart. Breast Support Thermoplastic assists in repositioning the breast for treatment.

Breast Thermoplastic vs Treatment Brassiere

- Breast Thermoplastics help lift and custom-shape the affected breast up off the chest wall, reducing skin reaction and unwanted radiation dose to the patient’s lung
- Treatment Brassieres position the breast similarly to the Breast Thermoplastic but are not a custom fit and are not affixed in a reproducible point to the breastboard



Breast Thermoplastic

These thermoplastics for breast positioning require two reusable handles that mount to the MT-350 and C-Qual™ Breastboards. They are available in Standard Perforated and IMRT Reinforced perforation styles.

	2.4 mm	3.2 mm	
Standard Perforated (White)	MTRFX9182.4	MTRFX918	
IMRT Reinforced (White)	MTRFI9182.4	MTRFI918	
Breast Support Handle System, Qty 2	-	-	MTRFH3

Breast & Thorax Vac-Lok™ Cushions



Vac-Lok cushions form a custom mold of a patient's anatomical contours and can easily be reinflated and remolded. Cushions are available in two durable finishes: urethane and nylon. Nylon cushions are reinforced and can be ordered with indexing bars attached.



Arms Up Vac-Lok, 105 cm long

MTVLARM02	Urethane
MTVLARM02C	Nylon
MTVLARM02FC	Nylon w/ indexing



Arms Up Vac-Lok, 75 cm long

MTVLARM01	Urethane
MTVLARM01C	Nylon
MTVLARM01FC*	Nylon w/ indexing



Wing Board™ Vac-Lok

MTVLWGB03	Urethane
MTVLWGB03C	Nylon



T-Shape Vac-Lok

MTVL0017	Nylon
----------	-------



Breastboard Vac-Lok

MTVLBRB01C*	Nylon
-------------	-------



One Arm Up Vac-Lok

MTVL04	Urethane
MTVL04C	Nylon

*Some Vac-Lok Cushions require longer lead time. Please ask your sales representative for lead times.

See pages 82 – 86 for more information on Vac-Lok Cushions.

Treatment Brassiere

The Treatment Brassiere reshapes the ipsilateral breast more favorably for radiation treatments while moving the contralateral breast away from the beam. A complete library of 40 brassiere cups is available, with or without a portable storage caddy. Also available individually or in sets of five.

Brassiere Cups

Treatment Brassieres are available for both the left and right breast. Intermediate volumes can be accommodated because the anterior portions of cups are cut off and tissues near the apex protrude. See chart below for sizing. Left and right cups are not interchangeable.

Individual cups can be ordered by using the group number plus the volume number. Example: MTBR100LL500



Clothing Cup Size	Observed Volume (mL)
A	94 – 225
B	146 – 458
C	267 – 835
D	499 – 1120
DD	988 – 1427+
DDD	2756 – 3176

			Cup Volume (mL) Included												
Left Group	Right Group		200	250	300	400	500	600	750	1000	1250	1500	2000	2500	3000
S	MTBR100SL	MTBR100SR	✓		✓	✓	✓	✓							
M	MTBR100ML	MTBR100MR		✓			✓		✓	✓	✓				
L	MTBR100LL	MTBR100LR					✓		✓	✓	✓	✓			
XL	MTBR100XLL	MTBR100XLR								✓		✓	✓	✓	✓
40 Cup Brassiere Library w/ Caddy MTBR100TBC			✓	✓	✓	✓	✓	✓	✓	✓	✓	✓	✓	✓	✓

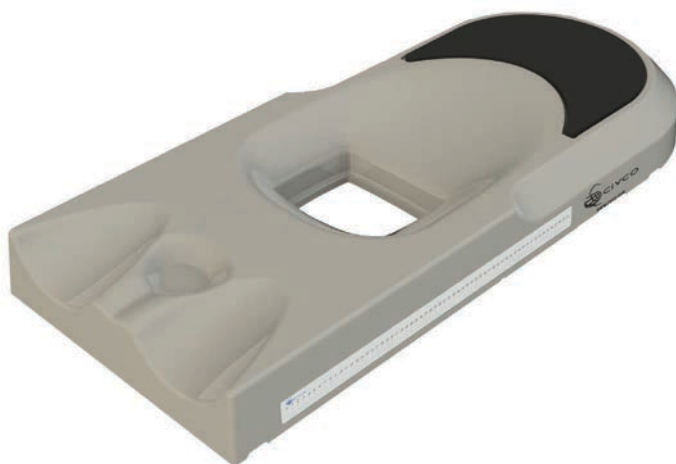
ALL PRODUCTS NOT CE MARKED

Hip & Pelvic

Versatile, Customizable, Comfortable

Patient positioning and immobilization for treatment of the hip and pelvic region range from re-positioning to immobilization devices – all taking versatility, customization and patient comfort into consideration. Positioning for these regions can be difficult due to organ motion and patient shape.


CIVCO provides a variety of hip and pelvic solutions including a Carbon Fiber and MRSeries™ Bellyboard that provides maximum treatment versatility along with customized bowel displacement for patient safety. The HipFix® Baseplate and Thermoplastic System also delivers comfortable immobilization to enhance fiducial targeting.



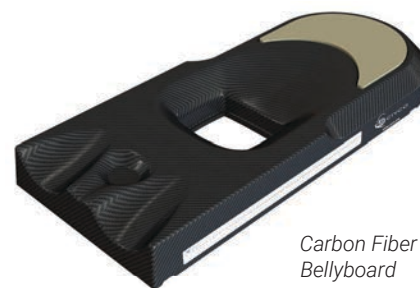
Carbon Fiber & MRSeries™ Bellyboards

These Bellyboards assist in reducing the irradiated small bowel volume of patients undergoing treatment in the pelvic region. The contoured opening allows for displacement of the small bowel, as the central support structure assists in compressing the small bowel forward into the opening.

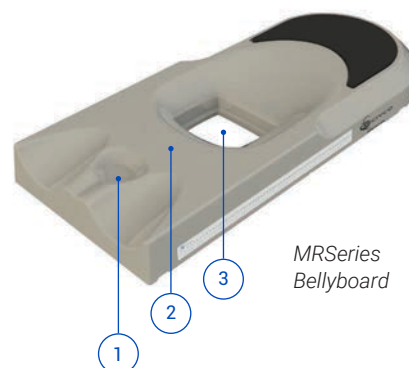
- Embedded fiducial crosshair can assist as a secondary setup reference
- Lightweight, rigid and indexable
- Lower part of board is adapted to support the patient's upper legs for maximum comfort
- Soft polyethylene padding ensures a comfortable position for the head

125012	Carbon Fiber Bellyboard
126000	MRSeries Bellyboard  MRSeries™
013140	Bellyboard Wall Storage

Caudal Aperture [1] to relieve pressure in the genital area. **Central Space [2]** allows compression to push the small bowel superior toward the **Major Aperture [3]**.



Carbon Fiber Bellyboard



MRSeries Bellyboard



Storage

Prone Thorax Support

The Prone Thorax Support is designed to relieve chest compression during treatments in the prone position. It can be used as a stand-alone patient support or as an option on the Bellyboard to allow large patients to be treated in the prone position in order to decrease the volume of irradiated small bowel.

301076	Cream
301102	Black



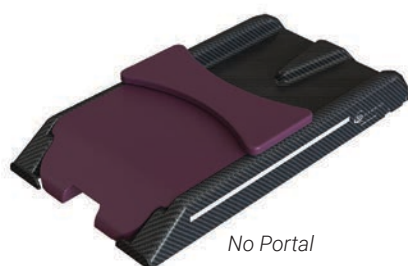
Contoura™ Bellyboard

The Contoura is made of carbon fiber to provide maximum treatment versatility. Customized bowel displacement can be achieved with the use of three interchangeable padded portal inserts.

- Shorter board (compared to other models) allows for additional setup flexibility for various patient lengths
- Prone-Lok™ indexable cushion or Pron-Pillo™ available for additional comfort



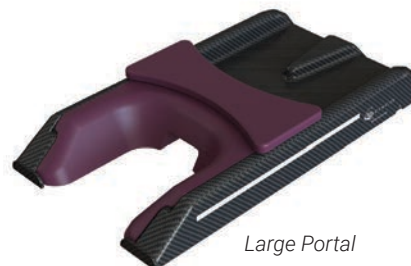
MTBBCF	Contoura Bellyboard with three portal inserts
MTPLC01	Prone-Lok Cushion
MTCB36	Pron-Pillo



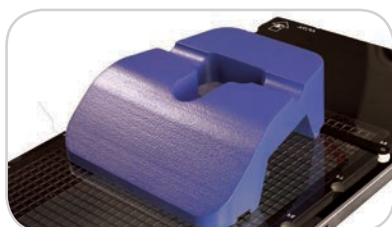
No Portal



Small Portal



Large Portal



Prone-Lok Positioning Cushion
(Optional - see page 79)



Pron-Pillo Positioning Cushion
(Optional - see page 79)

Combifix™ 3

The Combifix 3 is a baseplate that indexes to the couchtop and combines the Kneefix™ and Feetfix. It is recommended that both cushions are used in combination, as each cushion enhances the performance of the other, especially when treating the pelvic region.

151004 Includes Combifix Baseplate, Kneefix 3, Elevation Blocks (x2), Feetfix 3 & Feetfix Couch Support

151005 Includes Combifix Baseplate, Low Kneefix 2 Cushion, Elevation Block, Feetfix 3 & Feetfix Couch Support

013115 Combifix Wall Storage



Combifix 3

Combifix 3 Low



Combifix Storage

Feetfix™ Couch Support

The Feetfix Couch Support positions the Feetfix at indexed positions and allows the Feetfix to be tilted at four different angles. The Feetfix Couch Support can be purchased separately from the Combifix and is two-pin indexable.

302071 Feetfix Couch Support Bracket (Cushion not included)

013103 Feetfix Couch Support Wall Storage



Feetfix Couch Support with Cushion

Feetfix Couch Support Storage

Shoulder Retractors

This shoulder retractor system consists of straps in two different lengths with hand grips that can be attached in five positions on the Feetfix Couch Support or the Combifix 3. When using the shoulder retractor, the shoulders can be pulled down during radiotherapy simulation and treatment sessions where opposed lateral fields are used in the neck area.


302072 Short (x2) and Long (x2) Retractors



HipFix® & MRSeries™ HipFix

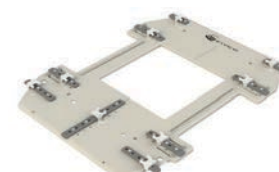
The HipFix hip and pelvis immobilization system utilizes a single sheet of thermoplastic over the entire abdomen and pelvis region, providing immobilization to enhance fixed fiducial targeting. The versatile system accommodates both prone and supine patient setups.

- Indexable baseplate features a cutout treatment window
- Vac-Lok™ or RediFoam™ Cushion can be integrated for added comfort, support and repositioning accuracy

MTPLVC04	HipFix Baseplate
MTPLVCMR	MR HipFix Baseplate 



HipFix



MR HipFix

HipFix Thermoplastics

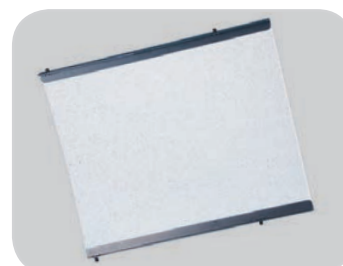
18 x 22" (45.7 cm x 55.8 cm)

HipFix Thermoplastics are available with reloadable or disposable handles with solid, standard perforated or IMRT Reinforced™ perforation styles. The handles and groin piece secure to the HipFix board, providing an indexable setup. They are sold in boxes of 5.

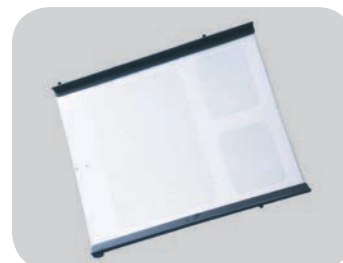
MTPLHA01	Reloadable Handles (x2) & Groin Piece
MTPLVCSUB8	Groin Piece for use with disposable thermoplastics

Perforation	Handle Type	Thickness	Part #
Solid	Reloadable	3.2 mm	MTHFX1822S
Solid	Reloadable	2.4 mm	MTHFX18222.4S
Solid	Disposable*	3.2 mm	MTPLHA0201
Perforated	Reloadable	3.2 mm	MTHFX1822
Perforated	Reloadable	2.4 mm	MTHFX18222.4
Perforated	Disposable*	3.2 mm	MTPLHA0202
IMRT Reinforced	Reloadable	3.2 mm	MTHFI1822
IMRT Reinforced	Reloadable	2.4 mm	MTHFI18222.4
IMRT Reinforced	Disposable*	3.2 mm	MTPLHAI0203

*Groin piece sold separately
All disposable thermoplastics are MRI compatible



Standard Perforated Thermoplastic



IMRT Reinforced Thermoplastic

Positioning Cushions



Prone-Lok™ Cushion

The Prone-Lok Positioning Cushion enhances patient comfort through its specially designed foam construction. Its contoured corners eliminate shoulder impingement. The center portal opens the patient's field of view, improving patient comfort. The Prone-Lok cushion is indexable and can be used with the Contoura™ Bellyboard. It can be easily cleaned and reused.

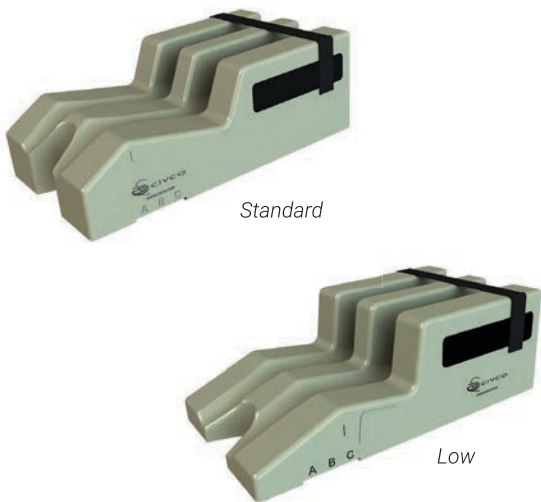
MTPLC01



Pron-Pillo™ Cushion

The Pron-Pillo provides comfort and stability for patients in the prone position. It can be easily cleaned and reused.

MTCB36



Dual Leg Positioner

The Dual Leg Positioner provides a quick capture of the lower legs for supine hip and pelvic treatments. The positioner is designed to hold the legs at the same level, thereby reducing rotation of the pelvis. An optional Velcro® strap secures the calves and ankles. It is indexable for enhanced reproducibility. It can be easily cleaned and reused.

MTDLI	Standard (76 x 46 x 19 cm)
MTDLIZ	Low (76 x 46 x 11 cm)

Positioning Cushions



Kneefix Indexing Holes

Kneefix™ 3

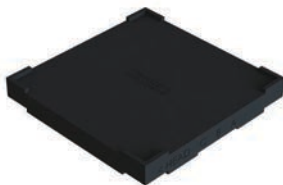
The Kneefix 3 cushion contributes to better stability and reproducibility in the supine position, regardless of the target area. It promotes patient comfort and is therefore ideal for use during lengthy procedures on rigid surfaces. The Kneefix 3 is 16 cm tall and is made of lightweight, closed cell foam that is easy to clean and is both two- and three-pin indexable. A Low Kneefix 2 (12 cm) is available for additional setup.

301052	Kneefix 3 (Cream)
301048	Low Kneefix 2 (Black)

Kneefix 3 Elevation Blocks

The Kneefix 3 Elevation Blocks can elevate the Kneefix 3 by 5 cm. The Kneefix fits in the topside of the elevation block and will not slide off. Elevation Blocks may be stacked to raise the legs even higher. The Kneefix 3 Elevation Blocks are both two- and three-pin indexable.

301055	Qty 1
301056	Qty 3



Feetfix™ 3

The Feetfix 3 is a universal patient support cushion for radiotherapy and diagnostic procedures and has been designed to provide comfortable positioning with enhanced immobilization. The Feetfix 3 is 16 cm tall and is made of lightweight, closed cell foam that is easy to clean. It can be used with either a two or three-pin indexable Lok-Bar™ or with the Feetfix Couch Support (page 77).

301071	Feetfix 3 (Cream)
--------	-------------------



Hip & Pelvic Vac-Lok™ Cushions

MRSeries™

Vac-Lok cushions form a custom mold of a patient's anatomical contours and can easily be reinflated and remolded. Cushions are available in two durable finishes: urethane and nylon. Nylon cushions are reinforced and can be ordered with an indexing feature attached.



75 x 100 cm

MTVLPLV01	Urethane
MTVLPLV01C	Nylon
MTVLPLV01FC	Nylon w/ indexing



75 x 120 cm

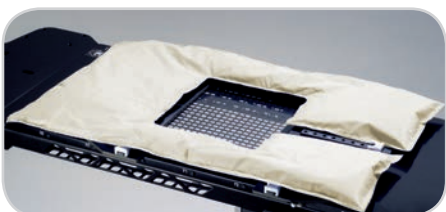
MTVLPLV02	Urethane
MTVLPLV02C	Nylon
MTVLPLV02FC	Nylon w/ indexing



80 x 100 cm

Note: This is a special order product and is not kept in stock; contact your account representative for lead times.

MTVLPLV03C	Hourglass - Nylon
------------	-------------------



Split Leg Cushion

For use with the HipFix® System.

MTVL71FC	Nylon w/ indexing
----------	-------------------

See pages 83 & 84 for more information on Vac-Lok cushions.

Vac-Lok™ Cushions & Positioning Aids

Comfortable, Easy-to-use, Reusable

Filled with tiny polystyrene beads, Vac-Lok cushions create a rigid, comfortable cradle around the patient when a vacuum is drawn through a self-sealing quick-release valve.



Vac-Lok™ Cushions

MRSeries™

- Available in two durable finishes: clear urethane and nylon
- Reinforced for resistance against punctures
- Some styles are available with indexing for enhanced patient positioning
- Reusable for ultimate cost-effectiveness
- Available with treatment windows to avoid any possible buildup



100 x 200 cm cushion for full body positioning



Indexing battens provide an easy method for repositioning Vac-Lok Cushions



Self-sealing quick-release valve



25 x 50 cm cushion for extremity positioning

Rectangular Vac-Lok Cushions

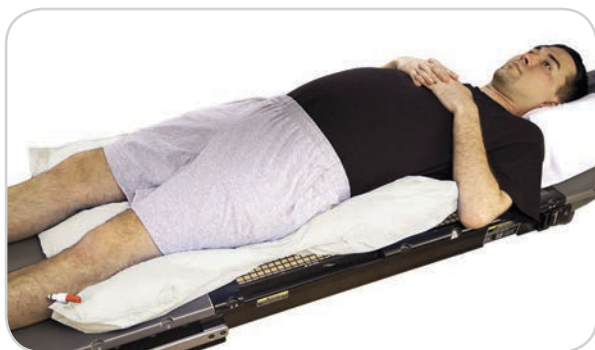
Dimensions	Fill (Liters)	Urethane	Nylon	Nylon w/Indexing
25 x 50 cm	2.25	MTVLE2.25	MTVLE2.25C	-
50 x 70 cm	15	MTVLF15	MTVLF15C	MTVLF15FC
70 x 70 cm	20	MTVLJ20	MTVLJ20C	MTVLJ20FC
70 x 100 cm	35	MTVLG35	MTVLG35C	MTVLG35FC
70 x 100 cm	40	MTVLG40	MTVLG40C	MTVLG40FC
75 x 100 cm	28	MTVLPLV01	MTVLPLV01C	MTVLPLV01FC
75 x 120 cm	34	MTVLPLV02	MTVLPLV02C	MTVLPLV02FC
75 x 150 cm	50	MTVLFBB01	MTVLFBB01C	MTVLFBB01FC
75 x 180 cm	62	-	-	MTVLFBB02FC
100 x 100 cm	40	MTVLB40	MTVLB40C	MTVLB40FC
100 x 150 cm	80	-	MTVLA80C*	-
100 x 200 cm	120	-	MTVLH120C*	-

*Some Vac-Lok Cushions require longer lead time. Please ask your sales representative for lead times.

Non-Rectangular Vac-Lok™ Cushions

Cushion	Dimensions	Fill (Liters)	Urethane	Nylon	Nylon w/ Indexing	Photo pg.
Prone	15 x 26 cm	0.5	MTVL27B*	-	-	-
Head & Shoulders "T"	50 x 70 cm	6	MTVL37	-	-	54
"T"	87.5 x 140 cm	25	-	MTVL14C25*	MTVL14FC25*	-
"T"	108 x 125 cm	44	-	-	MTVL0017	-
Type-S™	61 x 65 cm	8	-	MTVLTY01CX	-	54
Type-S	140 x 65 cm	27	-	-	MTVLTY02CX	54
"L"	74 x 80 cm	18	MTVL0011*	-	-	-
"L"	80 x 90 cm	28	MTVL0008*	-	-	-
Arms Up	75 x 75 cm	20	MTVLARM01	MTVLARM01C	MTVLARM01FC*	72
Arms Up	105 x 75 cm	28	MTVLARM02	MTVLARM02C	MTVLARM02FC	72
Breastboard	90 x 55 cm	15	-	MTVLBRB01C*	-	72
One Arm Up	100 x 80 cm	34	MTVL04*	MTVL04C	-	72
Wing Board™	88 x 55 cm	15	MTVLWGB03	MTVLWGB03C	-	72
Hourglass	80 x 100 cm	28	-	MTVLPLV03C*	-	81
Split Leg	60 x 100 cm	15	-	-	MTVL71FC	81

*Some Vac-Lok Cushions require longer lead time. Please ask your sales representative for lead times.



80 x 100 cm (Hourglass Cushion)



105 x 75 cm (Arms Up Cushion)



88 x 55 cm (Wing Board Cushion)



140 x 65 cm (Type-S Cushion)

Vac-Lok™ Accessories

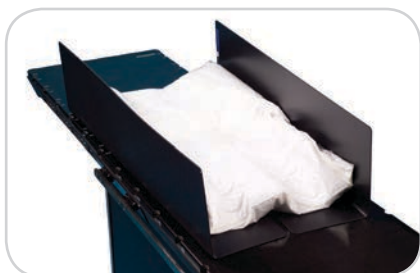


Vac-Lok Cleaner

This disinfectant is available for use on Vac-Lok cushions.

THIS PRODUCT IS ONLY AVAILABLE IN THE U.S.

MTCBPFC



Helping Hands™

The Helping Hands Cushion Manager is designed to help handle large-size Vac-Lok cushions that tend to hang off the couch during the forming process.

THIS PRODUCT HAS NOT BEEN CE MARKED

MTVLHH150



I.D. Tags

Color-coded tags provide quick identification of patient cushions. Tags are available in assorted colors and include tie strings.

MTVLTAG Pack of 25 Tags, Assorted Colors



Storage Racks

These space saving racks hold molded & inflated cushions. Plastic "S" hooks are available for hanging cushions.

MTVL3SR	Storage Rack, Stacked Rail (shown)
MTVL401	Storage Rack, Double Wide
MTVL402	Casters for MTVL401, Qty 4
MTVLHOOK	"S" Hooks, Qty 10

Slide Guide Lok-Bar

The Slide Guide Lok-Bar does not lock down to the indexing points along the couptop but slides longitudinally along the couptop. It is designed to prevent lateral movement and is useful for longer devices such as bellyboards, breastboards and Vac-Lok Cushions, which contract during forming.

MTVL00853

MTIL1006 Transverse

Vacuum Compressors



Dual Function Compressors

The Dual Function Vacuum Compressor, available in a 115V and 230V version, provides both a vacuum and inflate cycle with a convenient hand control or foot control. It provides an audible alarm when your optimum vacuum level is reached.

MTVP1	115V
MTVPEXA	230V, Europe
MTVPEXC	230V, Australia
MTVPEXD	230V, UK
MTVPEXG	230V, India
MTVPEXH	230V, Israel
MTVPFT	Foot Control (optional)



Single Function Compressors

The Single Function Vacuum Compressor is a lower cost alternative. It provides a vacuum cycle only. To re-inflate a Vac-Lok cushion, simply detach the compressor and depress the end of the cushion valve. With the MTVL1BEX the hoses can be switched to provide an inflate cycle.

THIS PRODUCT HAS NOT BEEN CE MARKED

MTVL1A	110V
MTVL1BEX	230V

Multifix™

The Multifix is a flexible system allowing arms and legs to be fixed in straight or bent positions, using small Posicast® precuts. These precuts are easily shaped to anatomical contours and are then fixed onto the baseplate on clearly indicated positions.

- Indexable baseplate to ensure a reproducible setup
- Four sets of indexing holes to offer an isocentric position of the treated extremity wherever it is placed on the Multifix

107063	Multifix Baseplate - Carbon Fiber
930080	Small Multifix Posicast-Plus Microperfo Thermoplastic



See page 49 for more information on Posicast Thermoplastics.

RediFoam™ Two-Part Positioning Foam

RediFoam two-part positioning foam is both CFC- and TDI-free. You can make setup marks directly onto RediFoam for verifiable repositioning throughout treatment.

MTFA39B	RediFoam - Small Includes 33 x 40" (83.8 x 101.6 cm) RediFoam bag
MTFA40B	RediFoam - Large Includes 39 x 46" (99.1 x 116.8 cm) RediFoam bag
MTFA41B	RediFoam - X-Large Includes 39 x 56" (99.1 x 142.2 cm) RediFoam bag

THIS PRODUCT IS ONLY AVAILABLE IN THE U.S.



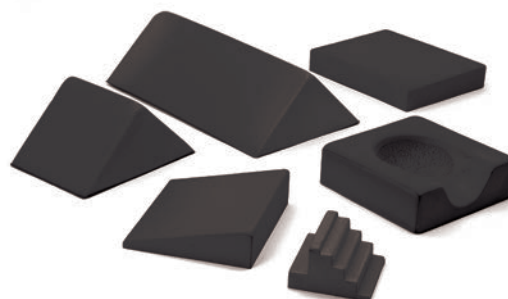
Multi Purpose Support Cushions

MRSeries™

Multi Purpose Support Cushions are exclusive closed cell PE foam that will not stain or absorb liquids. They are more firm than regular, coated support cushions. Five different shapes are sold separately or as a complete set, which also includes a Hand/Finger Positioner.

403024	Rectangle	30 x 24 x 5 cm
402422	15° Wedge	24 x 22 x 7 cm
402848	45° Wedge	28 x 48 x 14 cm
402820	45° Wedge	28 x 20 x 14 cm
402525	Head Support	25 x 25 x 8 cm
400006	Set of Six	-

NOTE: HAND/FINGER POSITIONER ONLY
AVAILABLE IN SET OF SIX (400006)



Foam Cushions & Wedges

A full line of white foam positioning aids for comfortable patient support are available. Covered knee bolsters and wedges can be easily cleaned and re-used.



MTVIPFFF105C	Rectangle	11 x 7 x 2" (27.9 x 17.8 x 5 cm)
MTVIPFFF106C	Circle	6 x 1½" (15.2 x 3.8 cm)
MTVIPFFF402C	Rectangle - Chest Positioner	14 x 24 x 2" (35.6 x 60.9 x 5 cm)
MTVIPFFF403C	Rectangle - Chest Positioner	14 x 25 x 4" (35.6 x 63.5 x 10.1 cm)
MTVIPFFF801C	Rectangle	10 x 7 x 1" (25.4 x 17.8 x 2.5 cm)
MTVIPFFF802C	Rectangle	10 x 7 x 2" (25.4 x 17.8 x 5 cm)
MTVIPFFF803C	Rectangle	10 x 7 x 3" (25.4 x 17.8 x 7.6 cm)
MTVIPFFF804C	Rectangle	10 x 7 x 4" (25.4 x 17.8 x 10.1 cm)
MTVIPFFF805C	Rectangle	20 x 7 x 4" (50.8 x 17.8 x 10.1 cm)
MTVIPFFF702C	Standard Set	Includes: 101C, 102C, 103C, 104C, 105C, 106C

THESE PRODUCTS HAVE NOT BEEN CE MARKED

35°/55° Wedge MTVIPFFF101C 	45° Wedge MTVIPFFF102C 	15° Wedge MTVIPFFF103C 	20° Wedge MTVIPFFF104C
45° Wedge MTVIPFFF107C 	27° Wedge MTVIPFFF203C 	45° Wedge MTVIPFFF205C 	Angled Bolster MTVIPFFF301C
Angled Bolster MTVIPFFF302C 	Knee/Back Bolster MTVIPFFF303C 	Bolster MTVIPFFF309C 	Torso Block MTVIPFFF401C
15° Wedge MTVIPFFF405C 	45° Wedge MTVIPFFF407C 	Chest/Leg Wedge MTVIPFFF502C 	Leg Immobilizer MTVIPFFF704C

Suremark® Skin Markers

Suremark

Suremark markers are useful in distinguishing between a nipple shadow and lesion.



MTSL10	1.0 mm, Qty 110/Box
MTSL15	1.5 mm, Qty 110/Box
MTSL20	2.0 mm, Qty 110/Box
MTSL25	2.5 mm, Qty 110/Box

Suremark Tabs

Suremark Tabs maintain the advantages of the Suremark markers with an added tabbed feature.



MTSL15T	1.5 mm, Qty 110/Box
MTSL20T	2.0 mm, Qty 110/Box

Suremark Relief Tabs

Suremark Relief Tabs have a unique adhesive-free center that won't stick to sensitive areas of the skin.



MTSL25RT	2.5 mm, Qty 110/Box
----------	---------------------

Suremark Wire

Suremark Wire is used for marking scar tissue, outlining palpable nodules, moles and entry points in CT scans.



MTSLW3	0.3 mm, 366 cm
MTSLW4	0.4 mm, 366 cm
MTSLW8	0.8 mm, 366 cm
MTSLW15	1.5 mm, 366 cm

CT Mark



CT Mark new blue formulation is specifically designed for CT and will not cause artifact.

MTCTW10	Wire, 1.0 mm, 330 cm
MTCTW20	Wire, 2.0 mm, 300 cm
MTCT23	2.3 mm, Qty 110/Box
MTCT40	4.0 mm, Qty 50/Box
MTCTCR3	Cross, 1.2 mm, Qty 50/Box

Powermark™

Powermark markers maintain the advantages of Suremark Marker and feature larger lead ball sizes for visibility in radiation therapy.



MTSL30	3.0 mm, Qty 50/Box
MTSL40	4.0 mm, Qty 50/Box

Clearline Scar Markers

Clearline Scar Markers provide outlining of scars and other areas of concern.



MTSLCL20	2.0 mm, 320 cm
MTSLCL25	2.5 mm, 203 cm

Visionmark

Visionmark Markers are specially formulated non-metallic markers that perform consistently and accurately in a variety of applications.



MTSLV25	2.5 mm, Qty 110/Box
MTSLV30	3.0 mm, Qty 50/Box
MTSLV40	4.0 mm, Qty 50/Box
MTSLV50	5.0 mm, Qty 50/Box

Patient Marking



Disposable Rectal & Vaginal Markers

ShadowForm® Markers are used for Simulation and CT planning. They are available in Rectal and Vaginal Markers; both have flexibility. They have a T-bar handle and can easily be removed for the optional insertion of barium.

- Available in rectal and vaginal markers
- Materials promote patient comfort and provide ease of use
- Visible on any x-Radiation Modality
- Disposable, single use only

MTZM1710 Disposable Rectal Marker, 10 cm long, Qty 10

MTZM1740 Disposable Rectal Marker, 40 cm long, Qty 10

MTZM1735 Disposable Vaginal Marker, 20 cm long, Qty 10



Spee-D-Mark™

Spee-D-Mark virtually eliminates confusion of shadows or lesions on film.

Spee-D-Mark Wings feature the advantages of regular Spee-D-Mark with the added benefit of a special “winged” design for comfortable, conforming placement.

THESE PRODUCTS HAVE NOT BEEN CE MARKED

MTSDM15C Standard 1.5 mm, Qty 100/Box

MTSDM20C Standard 2.0 mm, Qty 100/Box

Portal Markers

Set of marker tapes designed to outline the treatment field. This product is useful when planning multiple fields of treatment.

- Long lasting
- Comfortable
- Minimizes tattooing
- Water resistant

MTPM100 Standard - each sheet contains 8 field lines, 4 corners, 2 set-up points, 2 isocenters, 50 Sheets

MTPM150 Isocenter - 18 isocenters and 6 field lines, 50 Sheets

MRSeries™

Accurate transfer from MRI imaging to treatment

MRSeries products are intended for use in the MR environment. Always refer to product labeling to identify whether a device is MR Safe or MR Conditional.



Overlays

MRI overlays are made of fiberglass with a foam core, have indexing options and are compatible with a three-pin Lok-Bar™. Three-Pin Lok-Bars allow MRI compatible devices to be indexed to an MRI couchtop while preventing MR Unsafe devices from being used.



The following MRI Overlay options are available:

MRI Overlay for:	Dimensions	Indexing Style	Compatible Lok-Bar	Part #
Philips				
Panorama, 50 cm Wide (Only available from Philips)	214 x 50 x 2.2 cm	Prodigy	MTIL3454 (2 included)	MTM3400
Panorama, 40 cm Wide (Only available from Philips)	214 x 40 x 2.2 cm	Prodigy	MTIL3455 (2 included)	MTM3401
Ingenia	211 x 53 x 3.8 cm	Prodigy	MTIL3352 (2 included)	MTM3404
GE				
Signa (Only available from GE)	208 x 50 x 4.8 cm	Interloc	MTIL3351 (not included)	MTM3300
Wide Bore (750W or 450W) no GEM	213.4 x 53 x 6.2 cm	Interloc	MTIL3352 (1 included)	MTM3301
Wide Bore (750W or 450W) with GEM	204 x 53 x 2.1 cm	Interloc	MTIL3352 (1 included)	MTM3302
Siemens				
Magnetom Avanto, Magnetom Espree, Magnetom Symphony A Tim System, Magnetom Trio A Tim System	187 x 50 x 2.2 cm	Prodigy	MTIL3454 (1 included)	MTM3000
Magnetom Verio	187 x 50 x 2.2 cm	Prodigy	MTIL3454 (1 included)	MTM3001
Aera & Skyra (with Type-S mask attachment)	187 x 50 x 2.2 cm	Prodigy	MTIL3454 (1 included)	MTM3002
Aera & Skyra (with Posifix mask attachment)	187 x 50 x 2.2 cm	Prodigy	MTIL3454 (1 included)	MTM3003

For Three-Pin Lok-Bars, see page 13.

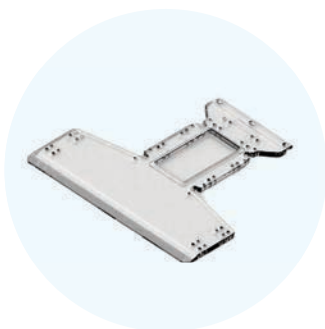


Positioning Devices

Head + Neck



MRI Type-S™ Overlay
Page 33



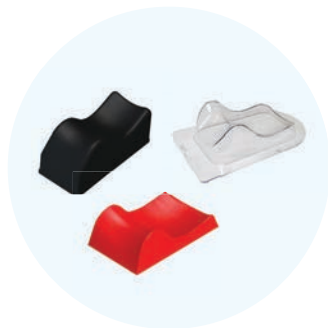
Acrylic Baseplates
Posifix® Page 46
Uni-frame® Page 40



Thermoplastics
Type-S Pages 35 – 39
Posifix Pages 41 – 44
Uni-frame Pages 47 – 50



trUpoint ARCH™ SRS/SRT System
Pages 26 & 27



Headrests
Pages 55 & 56



Customizable Head Support
Page 52



AccuForm™ Cushions
Page 53

Lung & Abdomen



Body Pro-Lok ONE™
Pages 16 & 17



Body Pro-Lok™
Pages 18 & 19



Rails-Only
Page 20

Positioning Devices

Breast & Thorax



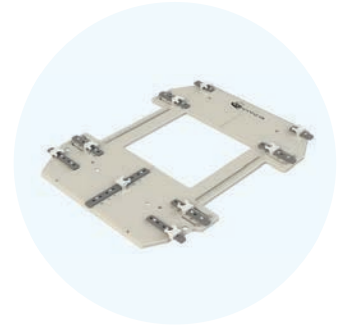
**Monarch™ Overhead
Arm Positioner**
Page 63



Wing Boards™
Page 70



MR Bellyboard
Page 75



HipFix® Baseplate
Page 78

Positioning Aids



**Vac-Lok™
Cushions**
Pages 83 & 84



**Kneefix™ 3
& Feetfix™ 3**
Page 80

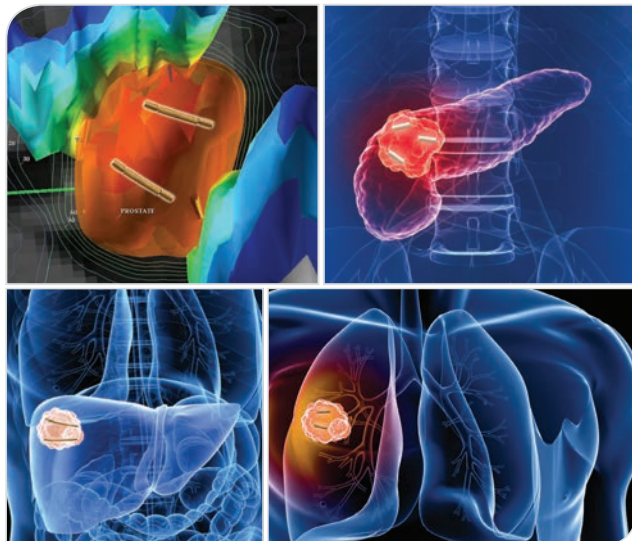


**Multipurpose
Support Cushions**
Page 88

Fiducial Markers

Accurate target localization

Implantable fiducial markers provide a highly effective method of ensuring accurate target localization for tumors/organs that move in respect to external anatomy, as well as for the precise localization needed for stereotactic radiotherapy. CIVCO offers the largest selection of specially designed fiducial markers, making your target always clearly visible.



Fiducial Markers

Disease Site Recommendations



Head & Neck



Breast



Lung



Abdomen



Prostate

Largest selection of specially designed fiducials includes:

- Linear gold coils with solid identifiable end points
- Linear gold coils specific for MRI and CT fusion
- Biocompatible artifact free polymer markers
- Fiducials linked at a specific distance for precise localization

Gold marker features:

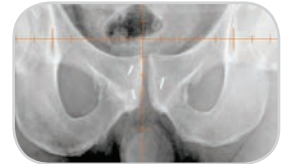
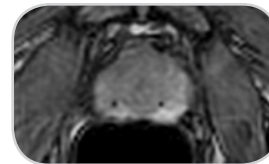
- Specially knurled surface is designed to inhibit migration
- 99.9% pure gold
- Non-biological imaging characteristics make markers easier to identify

Multiple needle gauge sizes:

- 20, 19, 18 and 17 gauge needles

FusionCoil™

The FusionCoil Marker images equally as well in CT as it does in MRI. It consists of an open spiral gold coil with a special biocompatible alloy core that appears as a solid black dot in MRI. This is the first of its kind, providing superior reference for image fusion as well as precise IGRT.



MTCTXFC1051820	1 x 5 mm marker	18 GA ETW x 20 cm needle	Qty 1	
MTCTXFC10101820	1 x 10 mm marker	18 GA ETW x 20 cm needle	Qty 1	
MTCTXFC10201820	1 x 20 mm marker	18 GA ETW x 20 cm needle	Qty 1	
MTCTXFC10251820*	1 x 5 mm marker <i>Includes 2 markers with a 15 mm bioabsorbable spacer.</i>	18 GA ETW x 20 cm needle	Qty 1	
MTCTXFC1051825*	1 x 5 mm marker	18 GA ETW x 25 cm needle	Qty 1	

FusionCoil SBRT Kit

Cartridge Kits reduce the number of needle passes and minimize the chance of Edema or Pneumothorax.

MTCTXFC001*	Pre-loaded FusionCoil needle, 18 GA x 20 cm, w/ 1 x 5 mm marker, Qty 1 Pre-loaded FusionCoil cartridges, 1 x 5 mm marker, Qty 2	
MTCTXFC105185*	Additional Pre-loaded FusionCoil cartridge, 1 x 5 mm marker, Qty 1	



*NOT CE MARKED

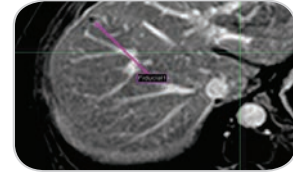
Fiducial Markers

Disease Site Recommendations



PolyMark™

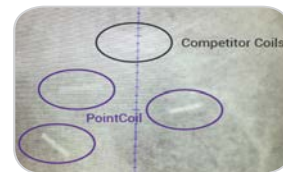
The PolyMark Marker is the first biocompatible polymer-based marker. It minimizes artifact, is visible using kV based IGRT solutions, MRI and is optimized for Proton Therapy.



MTCTXPM101820	1 x 3 mm marker	18 GA ETW x 20 cm needle	Qty 1	
MTCTXPM101825*	1 x 3 mm marker	18 GA ETW x 25 cm needle	Qty 1	
MTCTXPM0834	0.8 x 3 mm marker Loose, Sterile	-	Qty 4	

PointCoil™

The PointCoil Marker is a 5mm long helical coil that provides a single unique point for IGRT. The helical design maximizes stability and minimizes artifact.



MTCTXPC0605*	0.6 x 5 mm marker <i>Optimized for Proton. Minimal shadows when administering treatment.</i>	20 GA ETW x 20 cm needle	Qty 1	
MTCTXPC091820	0.9 x 5 mm marker	18 GA ETW x 20 cm needle	Qty 1	
MTCTXPC08	0.8 x 5 mm marker Loose, Sterile		Qty 1	

PointCoil™ SBRT Kit

Cartridge Kits reduce the number of needle passes and minimize the chance of Edema or Pneumothorax.

MTCTXPC0819153*	Trocar placement needle, 19 GA x 15 cm, Qty 1 Pre-loaded PointCoil cartridge, 0.8 x 5 mm marker, Qty 3		
MTCTXPC08185*	Additional Pre-loaded PointCoil cartridge, 0.8 x 5 mm marker, Qty 1		













*NOT CE MARKED

Fiducial Markers

FlexiCoil™

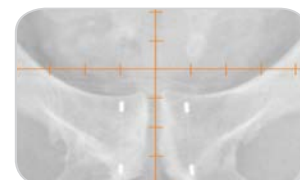
The FlexiCoil Marker is a unique, non-migrating marker with solid end points. FlexiCoil provides a unique image with two nodes that clearly define the end points.





MTCTXFC0610*	0.6 x 10 mm marker	20 GA ETW x 20 cm needle	Qty 1	   
MTCTXFC09101820	0.9 x 10 mm marker	18 GA ETW x 20 cm needle	Qty 1	 
MTCTXFC12101720	1.2 x 10 mm marker	17 GA ETW x 20 cm needle		 
MTCTXFC12201720	1.2 x 20 mm marker	17 GA ETW x 20 cm needle	Qty 1	 

FlexiMarc™ G/T

The FlexiMarc G/T Marker provides distinctive non-biological projection with easily definable nodes. The gold nodes are connected with a fine titanium line, which creates the optimal performance characteristics and visualization.

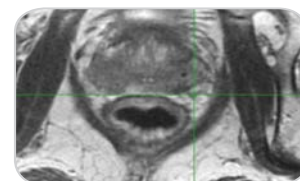

















MTCTXGT10182010	1 x 3 mm markers 10 mm spaced	18 GA ETW x 20 cm needle	Qty 1	
MTCTXGT10182020	1 x 3 mm markers 20 mm spaced	18 GA ETW x 20 cm needle	Qty 1	

Optimized for CyberKnife® prostate treatments.

Coupled Markers

Coupled Markers are 3 mm long with either 0.8 or 1.0 mm diameters attached at a fixed distance – 20 mm apart from center to center. They are secured with a sterile, tissue-absorbable material. This ensures that the markers are implanted at a known distance for calculating precise localization.



MTNW887709	0.8 x 3 mm markers	18 GA ETW x 20 cm needle	Qty 2	  
MTNW887710	1 x 3 mm markers	17 GA ETW x 20 cm needle	Qty 1	  
MTNW887712	1 x 3 mm markers	17 GA ETW x 20 cm needle	Qty 2	  
MTNW887711	1 x 3 mm markers	17 GA ETW x 20 cm needle	Qty 1	  
	1.2 x 3 mm markers	17 GA ETW x 20 cm needle	Qty 1	  

*NOT CE MARKED

Fiducial Markers

Disease Site Recommendations



Align™

Align Markers are 10 mm long to accommodate localization software systems that utilize linear fiducials as opposed to multiple segment points.



MTNW887883	0.8 x 10 mm marker	18 GA ETW x 20 cm needle	Qty 2			
MTNW887881	1.2 x 10 mm marker	17 GA ETW x 20 cm needle	Qty 2			
MTNW887882	1.2 x 10 mm marker	17 GA ETW x 20 cm needle	Qty 2			

CyberMark™

CyberMark Markers were developed specifically for use with Accuray's CyberKnife robotic radiosurgery system. The gold marker measures 5 mm long and 1 mm in diameter, as specified in the CyberKnife software.



MTNW887851	1 x 5 mm marker	18 GA ETW x 20 cm needle	Qty 1			
MTNW887853	1 x 5 mm marker	18 GA ETW x 20 cm needle	Qty 3			
MTNW887855	1 x 5 mm marker <i>Loose, Sterile</i>	-	Qty 4			

Bone Markers

Bone Markers are 99.9% pure gold 2 mm spheres recommended for head and neck applications. They are typically placed in a small hole in the bone and sealed with bone wax, with minimal marker migration.



MTNW887805	2 mm diameter <i>Loose, Sterile</i>	-	Qty 3	
------------	--	---	-------	--

Suture-Type Markers

Suture-Type Markers are designed for high accuracy breast tumor localization. The 99.9% pure gold spheres with small central holes are readily sutured in place to provide a permanent localization solution. They are prethreaded on absorbable sutures.

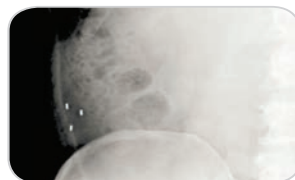
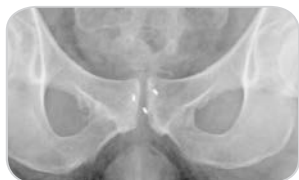






MTNW887866	2 mm diameter	-	Qty 3	
------------	---------------	---	-------	--

Fiducial Markers

Gold Soft Tissue Markers

Gold Soft Tissue Markers are 99.9% pure gold cylinders specially knurled to inhibit migration. They are 3 mm long and 0.8, 0.9, 1.2 or 1.6 mm in diameter. They are available loose or in sterilized preloaded needles.



MTNW887871	0.9 x 3 mm marker	18 GA ETW x 12 cm needle	Qty 1			
MTNW887870	0.9 x 3 mm marker	18 GA ETW x 12 cm needle	Qty 3			
MTNW887872	0.9 x 3 mm marker	18 GA ETW x 20 cm needle	Qty 1			
MTNW887873	0.9 x 3 mm marker	18 GA ETW x 20 cm needle	Qty 3			
MTNW887830	1.2 x 3 mm marker	17 GA ETW x 20 cm needle	Qty 1			
MTNW887825	1.2 x 3 mm marker	17 GA ETW x 20 cm needle	Qty 3			
MTNW887840	1.2 x 3 mm marker	17 GA ETW x 20 cm needle	Qty 4			
MTNW887836	1.2 x 3 mm marker	17 GA ETW x 30 cm needle	Qty 1			
MTNW887835	1.2 x 3 mm marker	17 GA ETW x 30 cm needle	Qty 3			
MTNW887837	1.2 x 3 mm marker	17 GA ETW x 30 cm needle	Qty 4			
MTNW887860	1.6 x 3 mm marker	14 GA ETW x 20 cm needle	Qty 3			
MTNW887808	0.8 x 3 mm marker <i>Loose, Sterile</i>	-	Qty 3			
MTNW887809	0.9 x 3 mm marker <i>Loose, Sterile</i>	-	Qty 3			
MTNW887812	1.2 x 3 mm marker <i>Loose, Sterile</i>	-	Qty 3			

Quality Assurance

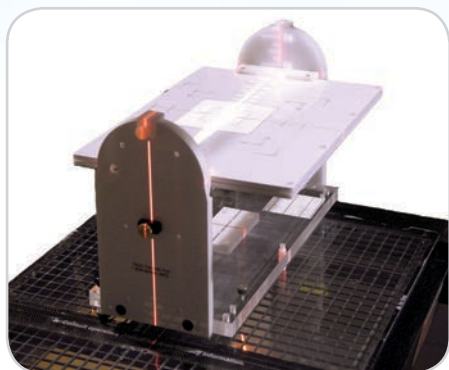


Iso-Align™

The Iso-Align is a multi-purpose, alignment device that assists in the routine quality control of lasers, linear accelerators and simulators. The Iso-Align accommodates a convenient film pack for radiation and light field verification. The Iso-Point Rotational Runout Tool on the Iso-Align allows you to accurately and easily verify the mechanical isocenter of the gantry. The Iso-Point is attached to a side panel of the Iso-Align device, extends 26 cm from the side panel and has a pointer tip with a 2 mm diameter.

The Iso-Align accurately and easily assists in multiple alignment procedures without repositioning the device, including:

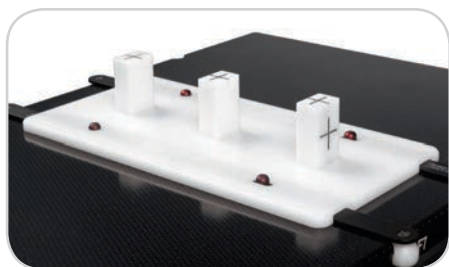
- Alignment of all lasers
- Collimator and table/couch rotational angle readout accuracy
- Light field alignment and jaw readout accuracy
- Mechanical isocenter of collimators and treatment tables/couches
- Optical distance indicator (ODI) accuracy at various distances
- Port film grid alignment
- Radiation and light field coincidence at various gantry angles
- Radiation isocenter of collimators, gantries and treatment tables/couches



MTIAD1

TG66 CT Simulation Laser QA Device

This unique device is an accessory designed specifically to check the performance of electromechanical components, simple geometric and imaging properties of CT scanners in accordance with AAPM protocol TG66. Gantry and vertical side-wall lasers can also be checked. The device is two-pin indexable and requires a two-pin Lok-Bar™.



MTTG66

Miscellaneous Accessories



Tungsten Eye Shields

Tungsten Eye Shields provide adequate protection of the ocular structure for electrons up to 9MeV. Each eye shield is coated with dental acrylic to reduce electron back scatter to an acceptable level.

Eye shields are sold individually in three sizes: small (19.5 mm), medium (23 mm) and large (25 mm).

MTT45S	Small, Qty 1
MTT45M	Medium, Qty 1
MTT45L	Large, Qty 1



Testicle Shields

Testicle Shields are designed to reduce scatter radiation to the testicles. Each unit is cast to provide a lead wall with a thickness of $\frac{1}{2}$ " (1.27 cm) and features an open sector to allow comfortable attachment to the patient. All surfaces are coated with a polyurethane paint.

The shield's top and bottom sections are secured with either the two included rubber straps or nylon tape. When using the testicle shield stand, no straps are needed.

THESE PRODUCTS HAVE NOT BEEN CE MARKED

MTTSS	Small, Qty 1
MTTSM	Medium, Qty 1
MTTSL	Large, Qty 1



Testicle Shield Stand

This adjustable stand offers increased patient comfort while raising or lowering the shield. A manual adjustment knob allows for easy vertical positioning from 1-10" (2.54 - 25.4 cm). The stand can be used for anterior and posterior treatments.

THIS PRODUCT HAS NOT BEEN CE MARKED

MTTSST

Miscellaneous Accessories



Bolus

Bolus is made from a solid, homogeneous, tissue-equivalent gel. It will not sag, deform or run. Bolus is available encased in a tough layer of thin plastic "skin" or "skinless", which is sticky for greater conformity to steep body contours. Bolus sheets can be cut with a scissors to any desired shape and layered to obtain the desired bolus effect.

Size	Thickness	Skinless (Not CE Marked)	Skinless (CE Marked)	w/ Skin (CE Marked)
30 x 30 cm	0.3 cm	MTCB403	MTCB403CE	MTCB403S
	0.5 cm	MTCB405	MTCB405CE	MTCB405S
	1.0 cm	MTCB410	MTCB410CE	MTCB410S
	1.5 cm	MTCB415	-	MTCB415S
	2.0 cm	MTCB420	-	MTCB420S
30 x 50 cm	0.5 cm	-	-	MTCB305005S
	1.0 cm	-	-	MTCB305010S
15 x 15 cm	0.5 cm	-	-	MTCB455S
	1.0 cm	-	-	MTCB450S
40 x 40 cm	0.5 cm	-	-	MTCB404005S
	1.0 cm	-	-	MTCB404010S

ALRA Skin Care

This special line of skin care products is designed to provide gentle, effective care for patients undergoing radiation therapy.

The moisturizer contains aloe vera, lanolin, Vitamin E, collagen and allantoin. It is fragrance-free. Unlike regular antiperspirants, the ALRA deodorant stick contains no metallic ingredients that can interfere with radiation. It contains the natural astringent cypress oil and the natural bactericide lichen. Your patients can order ALRA products directly from CIVCO (North America only).

THESE PRODUCTS HAVE NOT BEEN CE MARKED



MTCBALRASL4 Therapy Lotion, 4 oz

MTCBALRAD Non-Metallic Deodorant

Miscellaneous Accessories



Grip Rings

Grip rings offer patients an extra measure of security and comfort. The tough blue vinyl is smooth and easy to wipe clean with most antibacterial solutions. Grip Rings are sold individually and in sets.

THESE PRODUCTS HAVE NOT BEEN CE MARKED

MTVIP181	Ring for small hands (3" inside diameter)
MTVIP182	Ring for average hands (4.25" inside diameter)
MTVIP183	Ring for large hands or small feet (6" inside diameter)
MTVIP166	Set of 3 rings (3, 4.25 and 6" inside diameter)
MTVIP1664	Set of 4 rings (3, 4.25, 6 and 8" inside diameter)



Table Strap

The Table Strap ensures patient control, safety and comfort with a strong material that feels soft to the touch. The Table Strap features a two-way adjustable fastener made of double-faced Velcro® brand loop. It can be washed and sterilized. Individually packaged. 4" wide x 72" long.

THIS PRODUCT HAS NOT BEEN CE MARKED

MTVIP173



Incontinence Clamps

THESE PRODUCTS HAVE NOT BEEN CE MARKED

MTVIPU414R	Cunningham Clamp, Regular
MTVIPU414L	Cunningham Clamp, Large
MTVIPU413	Zipser Clamp (right photo)



Patient Transfer Board

The Patient Transfer Board is designed to ease patient transfer from a bed or stretcher to a treatment table with minimum effort. The board is constructed of a durable polyethylene material.

THIS PRODUCT HAS NOT BEEN CE MARKED

MTVIP40



Digital Level

The Digital Level provides a digital readout to a tenth of a degree.

MTDROL

Miscellaneous Accessories



Calipers

Body Calipers can be used for tabletop distances to determine central-axis and off-axis measurements. The reversing caliper orientation assists in determining separations such as laterals, obliques and off-table measurements. The wide base ensures perpendicularity to tabletop. A color-coded scale on both sides eliminates confusion with scale orientation.

It is made of precision-machined aluminum with a gold-tone finish. Components are hand-tapped, counterbored and assembled with steel screws for strength and stability. The easy-to-read screen printed scale is protected from wear by a recessed sliding scale indicator.

THESE PRODUCTS HAVE NOT BEEN CE MARKED

MTBC45	Body Caliper, 45 cm
MTBC55	Body Caliper, 55 cm

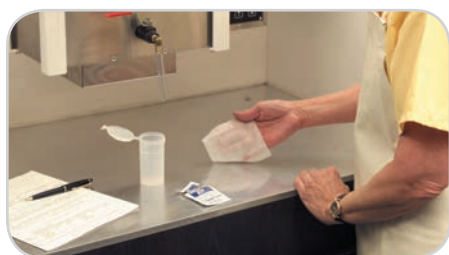


Air Sampling

CIVCO offers one-week rentals on OSHA-approved air sample pumps and filters. Simply conduct an eight-hour sample according to the instructions, then ship the pump and filter back to CIVCO. A written analysis will be sent back in three to four weeks.

ONLY AVAILABLE IN THE U.S.

AIRTEST



Wipe Test

The convenient mold room wipe test includes wipes, sample containers and a test area template. Simply conduct the test according to the instructions and return the sample to CIVCO. In three to four weeks, a written analysis will be available of both lead and cadmium levels to determine the effectiveness of clean-up procedures.

ONLY AVAILABLE IN THE U.S.

WIPETEST



Mobile Accessory Cart

This accessory cart has been specially designed to hold a wide variety of patient positioning and fixation devices. The cart can hold up to 300 lbs (135 kg) and measures 40⁵/₈ x 20 x 37¹³/₁₆" (103.2 x 50.8 x 96 cm). An optional storage bin is available for storing smaller items.

MTMC020	Mobile Accessory Cart (does not include storage bin)
20MC02005	Storage Bin

Index

A

Accessory Rail [8](#)
Accessory Rail Locking Block [14](#)
Accessory Rail Lok-Bar [14](#)
AccuForm Cushions [53](#)
AccuForm Positioner [53](#)

Acrylic Baseplates

Posifix [46](#)
Uni-frame [40](#)
Adapters [25, 57](#)

Air Sampling [106](#)
Align Markers [100](#)
ALRA Skin Care [104](#)

Arm Supports

Bi-Axial Arm Supports [67](#)
Cranial Arm Support [69](#)
Delrin Hand Grips [67](#)
Height Adjustable [69](#)
Monarch Overhead Arm Positioner [63](#)
Rigid Adjustable [69](#)
Wing Boards [70](#)

B

Bellyboards

Carbon Fiber [75](#)
Contoura [76](#)
MRSeries [75](#)
Bi-Axial Arm Support System [67](#)
Body Calipers [106](#)
Body Pro-Lok [18, 19](#)
Body Pro-Lok Bridges [21](#)
Body Pro-Lok ONE [16, 17](#)
Body Pro-Lok ONE evo Adapter [17, 21](#)
Body Pro-Lok Rails-Only [20](#)
Bolus [104](#)
Bone Markers [100](#)

Breastboards

C-Qual [64](#)
C-Qual M [62](#)
MT-350 [66](#)
New Horizon Prone [65](#)
Posiboard-2 [68](#)

Breastboard Timo Headrest [67](#)
Breast Support Thermoplastic [71](#)
Breast & Thorax Vac-Lok Cushions [72](#)

C

Calipers [106](#)

Carbon Fiber Baseplate

Posifix [46](#)
Uni-frame [40](#)
Carbon Fiber Bellyboard [75](#)
Carbon Fiber Platform [19, 22](#)
Chamfered AccuForm [53](#)
Clam-Lok Cushion [21](#)
Clearline Scar Markers [90](#)
ClearVision Thermoplastic [35, 41](#)
Combifix 3 [77](#)
Commercial Water Bath [59](#)
Contoura Bellyboard [76](#)
Couchtop Cover [58](#)
Couchtops [5, 6, 7, 8, 9, 10](#)
Coupled Markers [99](#)
C-Qual Breastboard [64](#)
C-Qual M Breastboard [62](#)
Cranial Arm Support [69](#)
CT Mark [90](#)
CT Overlays [10](#)
Cushion Adapters [57](#)
Customizable Head Support [52](#)
CyberMark Markers [100](#)

D

Delrin Hand Grips [67](#)
Digital Level [105](#)
Digital Water Bath [59](#)
Disposable Rectal Markers [91](#)
Disposable Vaginal Markers [91](#)
Dual Leg Positioner [79](#)

E

Elevation Blocks [23](#)
Exact Lok-Bar [12](#)
Extended Head Stop Headrests [55](#)
Extended Wing Board [70](#)

F

Feetfix 3 [23, 80](#)
Feetfix Couch Support [77](#)

Fiducial Markers

Align Markers [100](#)
Bone Markers [100](#)
Coupled Markers [99](#)
CyberMark Markers [100](#)
FlexiCoil Markers [99](#)
FlexiMarc G/T Markers [99](#)
FusionCoil Markers [97](#)
Gold Soft Tissue Markers [101](#)
PointCoil Markers [98](#)
PolyMark Markers [98](#)
Suture-Type Markers [100](#)
Fixator [33](#)
FlexiCoil Markers [99](#)
FlexiMarc G/T Markers [99](#)
Foam Cushions & Wedges [89](#)
Foot Extension [14](#)
Forehead Restraint [21](#)
FreedomView Thermoplastic [35, 41](#)
FusionCoil Markers [97](#)

G

Gel Head Cup [67](#)
Gold Soft Tissue Markers [101](#)
Grid Long Extension [7](#)
Grip Rings [105](#)

H

Head, Neck & Shoulders Baseplates [46](#)
Head & Neck Vac-Lok Cushions [54](#)
Head-Only Baseplates [46](#)
Headrest Adapters [57](#)

Headrests

AccuForm [53](#)
Customizable Head Support [52](#)
Extended Head Stop Headrests [55](#)
Gel Head Cup [67](#)
Posifix Contoured Headrests [56](#)
Posifix Pediatric Headrests [56](#)

Index

Posifix Prone Headrest [56](#)
Posifix Supine Headrests [56](#)
Posifix Wide Headrest [56](#)
Round Head Cup [67](#)
Silverman Headrests [55](#)
Storage [60](#)
Timo Headrests [55](#)
Headrest Storage [60](#)
Height Adjustable Arm Supports [69](#)
Helping Hands [85](#)
HipFix [78](#)
 Vac-Lok Cushion [81](#)
HipFix Thermoplastics [78](#)
Hip & Pelvic Vac-Lok Cushions [81](#)

I

iBEAM Overlay Adapter [33, 46](#)
I.D. Tags [85](#)
IMRT Reinforced Thermoplastics
 Breast Support [71](#)
 HipFix [78](#)
 Type-S [33, 35, 37, 39](#)
 Uni-frame [42](#)
Incontinence Clamps [105](#)
Indexing [11](#)
Individual Head Support [54](#)
Interloc Lok-Bar [12](#)
Iso-Align [102](#)

K

Kevlar Long Extension [7](#)
Kevlar Platform [19, 22](#)
Kneefix 3 [23, 80](#)
Kneefix 3 Elevation Blocks [80](#)

L

Lateral Baseplate [40](#)
Lok-Bars [12, 13, 24, 85](#)
Long Extension Storage Device [8](#)
L-Profiles [50](#)

M

Mastercast Pro Thermoplastics [47](#)

Miscellaneous Thermoplastics [39, 44, 50](#)
Mobile Accessory Cart [106](#)
Monarch Overhead Arm Positioner [22, 63](#)
MRI Overlays [93](#)
MRI Posi-S Adapter [57](#)
MRI Type-S Overlay [33](#)
MRSeries Bellyboard [75](#)
MRSeries HipFix [78](#)
MRSeries Positioning [94, 95](#)
MT-350 Breastboard [66](#)
MTIL6665 [7](#)
Multifix [87](#)
Multi Purpose Support Cushions [88](#)

N

New Horizon Prone Breastboard [65](#)
Non-Metallic Deodorant [104](#)

O

ONEBridge [16, 21](#)
ONEBridge Storage Base [25](#)
ONEPlatform [17, 22](#)
ONE Respiratory Belt [16, 22](#)
Overlay Board [33](#)
Overlays - CT [10](#)
Overlays - MR [93](#)
Overlay Stand [14](#)

P

Pan Liner [59](#)
Patient Handles [8, 23](#)

Patient Marking

 Portal Markers [91](#)
 Rectal Markers [91](#)
 Spee-D-Mark [91](#)
 Suremark Skin Markers [90](#)
 Vaginal Markers [91](#)

Patient Shielding [103](#)
Patient Transfer Base [25](#)
Patient Transfer Board [105](#)
Pediatric Masks [38, 43](#)
PinnPoint Lok-Bar [13](#)
PointCoil Markers [98](#)

PolyMark Markers [98](#)
Portal Markers [91](#)
Posiboard-2 Breastboard [68](#)
Posicast-Lite Thermoplastics [48](#)
Posicast Microperfo Plate [50](#)
Posicast-Plus Thermoplastics [49](#)
Posifix Contoured Headrests [56](#)
Posifix Long Extension [7](#)
Posifix Pediatric Headrests [56](#)
Posifix & Posirest Baseplate Storage [60](#)
Posifix Prone Headrest [56](#)
Posifix Supine Headrests [56](#)

Posifix System

 Baseplates [46](#)
 Mastercast Pro Thermoplastics [47](#)
 Posicast Thermoplastics [48, 49, 50](#)

Posifix Wide Headrest [56](#)
Posirest-2 [68](#)
Posi-S Adapter [57](#)
Positilt [46](#)
Powermark [90](#)
Precise Bite [51](#)
Prodigy 2 Lok-Bar [8, 9, 12, 24](#)
Prodigy Lok-Bar [12](#)
Prone Head Holder [40](#)
Prone-Lok Cushion [79](#)
Prone Thorax Support [75](#)
Pron-Pillo Cushion [79](#)
Protura [29](#)
PureVision Thermoplastic [35, 41](#)

R

Rails-Only System [20](#)
Rectal & Vaginal Markers [91](#)
Rectangular Long Extension [7](#)
RediFoam [88](#)
Reinforcement Thermoplastic Strips [39](#)
Respiratory Belt [18, 22](#)
Respiratory Plate [21](#)
Reusable L-Profiles [50](#)
Rigid Adjustable Arm Supports [69](#)

Index

Round Head Cup [67](#)

S

SBRT Body Pro-Lok [18, 19](#)

SBRT Body Pro-Lok ONE [16, 17](#)

SBRT ONEPlatform Packages [17](#)

SBRT Platform Packages [19](#)

Shims [57](#)

Shoulder Restraint Bridge 2 [23](#)

Shoulder Retractor [58, 77](#)

Silverman Headrests [55](#)

Skinless Bolus [104](#)

Slide Guide Lok-Bar [13, 24](#)

Soft Tissue Gold Markers [101](#)

Spee-D-Mark [91](#)

SRS/SRT trUpoint ARCH [27](#)

Standard Perforation Thermoplastics

Breast [71](#)

HipFix [78](#)

Type-S [33, 35, 37, 38, 39](#)

Uni-frame [41, 43](#)

Standard Wing Board [70](#)

Storage Systems [60](#)

Suremark Skin Marking Labels [90](#)

Suture-Type Markers [100](#)

T

Table Strap [105](#)

Tapered Wing Board [70](#)

Testicle Shields [103](#)

Testicle Shield Stand [103](#)

TG66 CT Simulation Laser QA Device [102](#)

Therapy Lotion [104](#)

Thermoplastic Pellets [44](#)

Thorawedge [66](#)

Three-Pin Lok-Bar [13](#)

Timo Headrest Adapter Plate [67](#)

Timo Headrests [55](#)

T-Pin Lok-Bar [24](#)

Tranquility Series Thermoplastics [35, 41](#)

Transverse Lok-Bar [13, 24](#)

Treatment Brassiere [73](#)

trUpoint ARCH [27](#)

T-Shape Vac-Lok [23, 84](#)

Tungsten Eye Shields [103](#)

Two-Pin Baseplate Storage [60](#)

Type-S Long Extension [7](#)

Type-S System

Fixator [33](#)

iBEAM Overlay Adapter [33](#)

MRI Type-S™ Overlay [33](#)

Overlay Board [33](#)

Standard Perforation [38](#)

Thermoplastics [35, 36, 37, 38, 39](#)

Universal Couchtop Long Extension [32](#)

Variable Axis Baseplate [32](#)

Varian Style Extension [32](#)

U

Uni-frame System

Baseplates [40](#)

Lateral Baseplate [40](#)

Prone Head Holder [40](#)

Thermoplastics [41, 42, 43, 44](#)

Tilting Baseplates [40](#)

Universal Couchtop 1 Piece [9](#)

Universal Couchtop Head Extension [8](#)

Universal Couchtop Long Extension [6, 7, 8](#)

Universal Couchtop SBRT Packages [17, 19](#)

V

Vac-Lok Cleaner [85](#)

Vac-Lok Cushions

Breast & Thorax [72](#)

Head & Neck [54](#)

Helping Hands [85](#)

Hip & Pelvic [81](#)

Non-Rectangular [84](#)

Rectangular [83](#)

Storage Racks [85](#)

Vacuum Compressors [86](#)

Vaginal Markers [91](#)

Variable Axis Baseplate [32](#)

Varian End Plate [8](#)

Varian End Plate for the UCT 1 Piece [9](#)

Varian Style Extension [32, 45](#)

Varian Style Extension Storage [60](#)

Visionmark [90](#)

W

Water Bath Cart [59](#)

Water Baths [59](#)

Wide Headrest [69](#)

Wing Boards [70](#)

Wipe Test [106](#)

Z

ZENTEC Thermoplastics [36, 42](#)

Part Number Index

20CFHNPSUB1P 38	301001 56	402525 88	990045 47
20CFHNSUB2 33	301002BLK 56	402820 88	990145 47
20HF033 27	301003BLK 56	402848 88	991145 47
20MC02005 106	301004BLK 56	403024 88	AIRTEST 106
20VARSUB10 12	301005BLK 56	622510 50	BPL001 21
013101 60	301008 56, 69	770030 50	BPL002 22
013103 77	301016 32, 57	770033 50	BPL003 22
013106 60	301022 56	770044 50	BPL005 25
013107 60	301023 56	770145 50	BPL010 21
013115 77	301024 56	772030 48	BPL100 17
013140 75	301025 32, 56	772044 48	BPL110 17
013156 62, 64	301026 56	772145 48	BPL200 17
013159 60	301027 56	900030 50	BPL210 17
013165 68	301029 57	900145 50	BPL230 17
101019 27, 46	301030 55	904392 50	BPLONEUPG3 17
101025 46	301032 55	910030 50	CHS01 52
102021 46	301033 55	910044 50	CHS02 52
104021 46	301034 55	910145 50	MT202 40
105021 46	301048 80	914392 50	MT250SUB10 67
106020 69	301052 23, 80	920030 50	MT250SUB11 67
106024 69	301055 23, 80	920033 50	MT350N 66
106025 69	301056 80	920044 50	MT350WSD 66
106048 69	301071 23, 80	920145 50	MT400 64
106521 68	301076 75	924392 50	MT401 64
106522 68	301080 66	930030 49	MT2504 67
107020 46	301081 66	930033 49	MT20100 40
107063 87	301082 66	930044 49	MT20100CF 40
108010 45	301090 58	930055 49	MT20103CF 40
108020 27, 45	301091 58	930080 87	MT20104 40
108072 27, 46	301102 75	930145 49	MT350400 67
108073 33	301234 56	940030 50	MTACL001 53
109030 68	302071 77	940145 50	MTACL1520 53
125012 75	302072 77	970031 27, 48	MTACL2035 52, 53
126000 75	305000BLK 56	990030 47	MTACL2035HF 52, 53
151004 77	400006 88	990031 47	MTACL2045 53
151005 77	402422 88	990044 47	MTACL4060 53

Part Number Index

MTACL6060 53	MTAPUCP301 44	MTAPUR122.4 39	MTCB455S 104
MTACL14242 53	MTAPUD 38	MTAPUR142.4 39	MTCB305005S 104
MTACLTPES1 53	MTAPUD002 39	MTAPUW 43	MTCB305010S 104
MTAPS2.4 39	MTAPUD2.4 38	MTAPUW2.4 43	MTCB404005S 104
MTAPS3.2 39	MTAPUD1224 39	MTAPUW122.4 44	MTCB404010S 104
MTAPS3A 39, 44	MTAPUD1424 39	MTAPWW3V 59	MTCBALRAD 104
MTAPS25 39, 44	MTAPUI1824 42	MTAPWW3VEX 59	MTCBALRASL4 104
MTAPS35 39, 44	MTAPUI1824VT 42	MTARB001 14	MTCBPBITE 51
MTAPS18391 39, 44	MTAPUI1832 42	MTARB002 14	MTCBPBITES 51
MTAPSD001 39	MTAPUI1832CL 41	MTBBCF 76	MTCBPBITETD 51
MTAPSD2.4 38	MTAPUI2024 44	MTBC45 106	MTCBPBITETDS 51
MTAPSD3.2 38	MTAPUI2032 44	MTBC55 106	MTCBPBITEWRM 51
MTAPSI29NR32 39	MTAPUI2232 44	MTBR100LL 73	MTCBPFC 85
MTAPSI2724 39	MTAPUID1824 37	MTBR100LR 73	MTCBPLL 59
MTAPSI2732 39	MTAPUID1824VT 36	MTBR100ML 73	MTCD1600 59
MTAPSI2932 39	MTAPUID1832 37	MTBR100MR 73	MTCD1600EX 59
MTAPSID27NR24 37	MTAPUID1832CL 35	MTBR100SL 73	MTCFHN006 33
MTAPSID27NR32 37	MTAPUID1832CLRD 35	MTBR100SR 73	MTCFHN006SUB6 33
MTAPSID27NR32CL 35	MTAPUID1832VT 36	MTBR100TBC 73	MTCFHNC 33
MTAPSID29NR24 39	MTAPUID2024 39	MTBR100XLL 73	MTCFHNP 33
MTAPSID29NR32 39	MTAPUID2032 39	MTBR100XLR 73	MTCFHNV 32
MTAPSID2724 37	MTAPUID2232 39	MTCB36 76, 79	MTCFHNVAB01 32
MTAPSID2724VT 36	MTAPUID181232 39	MTCB403 104	MTCT23 90
MTAPSID2732 37	MTAPUID181332RD 37	MTCB403CE 104	MTCT40 90
MTAPSID2732VT 36	MTAPUID181432 39	MTCB403S 104	MTCTCR3 90
MTAPSID2924 39	MTAPUIR1832 39	MTCB405 104	MTCTW10 90
MTAPSID2932 39	MTAPUIR1832CL 41	MTCB405CE 104	MTCTW20 90
MTAPSP2.4 38	MTAPUIR2032 39	MTCB405S 104	MTCTXFC001 97
MTAPU 43	MTAPUIR2232 39	MTCB410 104	MTCTXFC0610 99
MTAPU1.6 44	MTAPUIW1824VT 42	MTCB410CE 104	MTCTXFC105185 97
MTAPU2.4 43	MTAPUIW1832VT 42	MTCB410S 104	MTCTXFC1051820 97
MTAPU12 44	MTAPUL 40	MTCB415 104	MTCTXFC1051825 97
MTAPU14 44	MTAPUL2.4 40	MTCB415S 104	MTCTXFC09101820 99
MTAPU122.4 44	MTAPUNB 43	MTCB420 104	MTCTXFC10101820 97
MTAPU142.4 44	MTAPUR 39	MTCB420S 104	MTCTXFC10201820 97
MTAPUCP201 44	MTAPUR2.4 39	MTCB450S 104	MTCTXFC10251820 97

Part Number Index

MTCTXFC12101720 99	MTIHS03 54	MTIL5051 13	MTIL6521 9
MTCTXFC12201720 99	MTIL1000 14	MTIL5052 13	MTIL6540 6
MTCTXGT10182010 99	MTIL1006 13, 85	MTIL5053 13	MTIL6541 6
MTCTXGT10182020 99	MTIL1104 14	MTIL6000SU 8	MTIL6612 9
MTCTXPC08 98	MTIL3001 10	MTIL6020 9	MTIL6615 25
MTCTXPC0605 98	MTIL3013 10	MTIL6021 9	MTIL6616 25
MTCTXPC08185 98	MTIL3019 10	MTIL6022 9	MTIL6617 8
MTCTXPC091820 98	MTIL3020 10	MTIL6023 9	MTIL6620 25
MTCTXPC0819153 98	MTIL3051 12	MTIL6024 9	MTIL6630 8
MTCTXPM0834 98	MTIL3151 10, 12	MTIL6026 9	MTIL6660 7
MTCTXPM101820 98	MTIL3152 10, 13	MTIL6040 6	MTIL6661 7
MTCTXPM101825 98	MTIL3300 10	MTIL6041 6	MTIL6662 7
MTDLI 79	MTIL3301 10	MTIL6042 6	MTIL6663 7
MTDLIZ 79	MTIL3306 10	MTIL6043 6	MTIL6665 7, 32
MTDROL 105	MTIL3310 10	MTIL6044 6	MTIL6666 7, 45
MTFA39B 88	MTIL3311 10	MTIL6045 6	MTIL6667 8
MTFA40B 88	MTIL3350 10, 12	MTIL6046 6	MTIL6668 7, 27, 45
MTFA41B 88	MTIL3351 13, 93	MTIL6050 8, 9, 12, 24	MTIL662501 8, 23
MTGBSUB1 70	MTIL3352 13, 93	MTIL6051 8, 9, 12, 13, 24	MTIL662502 8, 23
MTGBSUB3 70	MTIL3403 10	MTIL6053 8, 12	MTIL3006001 14
MTHF016 27	MTIL3404 10	MTIL6054 24	MTIL3006002 14
MTHF135 27	MTIL3453 10	MTIL6120 9	MTLTBP 40
MTHF150 27	MTIL3454 13, 93	MTIL6121 9	MTLTBP2 40
MTHF225 27	MTIL3455 13, 93	MTIL6140 6	MTLTBPIAT 40
MTHFI1822 78	MTIL3502 10	MTIL6141 6	MTLTBPIAT01 40
MTHFI18222.4 78	MTIL3650 12	MTIL6220 9	MTM400 62
MTHFX1822 78	MTIL3651 12	MTIL6240 6	MTM3000 93
MTHFX1822S 78	MTIL3652 10, 13	MTIL6320 9	MTM3001 93
MTHFX18222.4 78	MTIL3653 10, 12	MTIL6321 9	MTM3002 93
MTHFX18222.4S 78	MTIL3704 10	MTIL6322 9	MTM3003 93
MTHPBB01 65	MTIL3705 10	MTIL6323 9	MTM3300 93
MTHPBB01K 65	MTIL3706 10	MTIL6341 6	MTM3301 93
MTHPBB103 65	MTIL3850 12	MTIL6343 6	MTM3302 93
MTIAD1 102	MTIL3950 13	MTIL6420 9	MTM3400 93
MTIHS01 27, 54	MTIL4101 10	MTIL6440 6	MTM3401 93
MTIHS02 54	MTIL5050 13	MTIL6520 9	MTM3404 93

Part Number Index

MTMC020 106	MTPLVC04 78	MTSBRT300 19	MTSLW4 90
MTMC01003 59	MTPLVCMR 78	MTSBRT310 19	MTSLW8 90
MTMRHNPN 33	MTPLVCSUB8 78	MTSBRT320 19	MTSLW15 90
MTMRHNTYPES 33	MTPM100 91	MTSBRT350 20	MTSR01 58
MTNW887709 99	MTPM150 91	MTSBRT360 20	MTSR02 58
MTNW887710 99	MTRFH3 71	MTSBRT410K 19	MTSR03 58
MTNW887711 99	MTRFI918 71	MTSBRT420K 19	MTT45L 103
MTNW887712 99	MTRFI9182.4 71	MTSDM15C 91	MTT45M 103
MTNW887805 100	MTRFX918 71	MTSDM20C 91	MTT45S 103
MTNW887808 101	MTRFX9182.4 71	MTSHIM01 57	MTTAS2L 67
MTNW887809 101	MTRH1500 59	MTSHIM01S 57	MTTAS2R 67
MTNW887812 101	MTRH1500EX 59	MTSHIMS 57	MTTG66 102
MTNW887825 101	MTSBRT001L 19	MTSHIMT 57	MTTIMO 55
MTNW887830 101	MTSBRT002 22	MTSILVER2 55	MTTIMOA 55
MTNW887835 101	MTSBRT003 21	MTSILVER2A 55	MTTIMOB 55
MTNW887836 101	MTSBRT004 22	MTSILVER2B 55	MTTIMOC 55
MTNW887837 101	MTSBRT005 23	MTSILVER2C 55	MTTIMOD 55
MTNW887840 101	MTSBRT007 21	MTSILVER2D 55	MTTIMOE 55
MTNW887851 100	MTSBRT009 24	MTSILVER2E 55	MTTIMOF 55
MTNW887853 100	MTSBRT011 25	MTSILVER2F 55	MTTIMOL 55
MTNW887855 100	MTSBRT018 21	MTSL10 90	MTTSL 103
MTNW887860 101	MTSBRT031 21	MTSL15 90	MTTSM 103
MTNW887866 100	MTSBRT038 23	MTSL15T 90	MTTSS 103
MTNW887870 101	MTSBRT039 21	MTSL20 90	MTTSST 103
MTNW887871 101	MTSBRT050 20	MTSL20T 90	MTTWS2S 67
MTNW887872 101	MTSBRT051 20, 23	MTSL25 90	MTVAR46 13
MTNW887873 101	MTSBRT052 20	MTSL25RT 90	MTVIP40 105
MTNW887881 100	MTSBRT053 20	MTSL30 90	MTVIP166 105
MTNW887882 100	MTSBRT054 24	MTSL40 90	MTVIP173 105
MTNW887883 100	MTSBRT055 24	MTSLCL20 90	MTVIP181 105
MTPFC02 32	MTSBRT059 20	MTSLCL25 90	MTVIP182 105
MTPLC01 76, 79	MTSBRT060 20	MTSLV25 90	MTVIP183 105
MTPLHA01 78	MTSBRT070 22	MTSLV30 90	MTVIP1664 105
MTPLHA0201 78	MTSBRT202 21	MTSLV40 90	MTVIPFFF101C 89
MTPLHA0202 78	MTSBRT203 25	MTSLV50 90	MTVIPFFF102C 89
MTPLHAI0203 78	MTSBRT224 25	MTSLW3 90	MTVIPFFF103C 89

Part Number Index

MTVIPFFF104C 89	MTVL0017 23, 72, 84	MTVLHOOK 85	OAP110 22, 63
MTVIPFFF105C 89	MTVL27B 84	MTVLJ20 83	WIPETEST 106
MTVIPFFF106C 89	MTVL37 54, 84	MTVLJ20C 83	
MTVIPFFF107C 89	MTVL71FC 81, 84	MTVLJ20FC 83	
MTVIPFFF203C 89	MTVL401 85	MTVLPLV01 81, 83	
MTVIPFFF205C 89	MTVL402 85	MTVLPLV01C 81, 83	
MTVIPFFF301C 89	MTVL00853 13, 24, 85	MTVLPLV01FC 81, 83	
MTVIPFFF302C 89	MTVLA80C 83	MTVLPLV02 81, 83	
MTVIPFFF303C 89	MTVLARM01 72, 84	MTVLPLV02C 81, 83	
MTVIPFFF309C 89	MTVLARM01C 72, 84	MTVLPLV02FC 81, 83	
MTVIPFFF401C 89	MTVLARM01FC 72, 84	MTVLPLV03C 81, 84	
MTVIPFFF402C 89	MTVLARM02 72, 84	MTVLTAG 85	
MTVIPFFF403C 89	MTVLARM02C 72, 84	MTVLTY01CX 54, 84	
MTVIPFFF405C 89	MTVLARM02FC 72, 84	MTVLTY02CX 54, 84	
MTVIPFFF407C 89	MTVLB40 83	MTVLWGB03 72, 84	
MTVIPFFF502C 89	MTVLB40C 83	MTVLWGB03C 72, 84	
MTVIPFFF702C 89	MTVLB40FC 83	MTVP1 86	
MTVIPFFF704C 89	MTVLBRB01C 72, 84	MTVPEXA 86	
MTVIPFFF801C 89	MTVLE2.25 83	MTVPEXC 86	
MTVIPFFF802C 89	MTVLE2.25C 83	MTVPEXD 86	
MTVIPFFF803C 89	MTVLF15 83	MTVPEXG 86	
MTVIPFFF804C 89	MTVLF15C 83	MTVPEXH 86	
MTVIPFFF805C 89	MTVLF15FC 83	MTVPFT 86	
MTVIPU413 105	MTVLFBB01 83	MTVRT20 35	
MTVIPU414L 105	MTVLFBB01C 83	MTVRTR 35, 41	
MTVIPU414R 105	MTVLFBB01FC 83	MTVRTW 41	
MTVL1A 86	MTVLFBB02FC 83	MTWB08T 70	
MTVL1BEX 86	MTVLG35 83	MTWB08U 70	
MTVL3SR 85	MTVLG35C 83	MTWB09 70	
MTVL04 72, 84	MTVLG35FC 83	MTWB10T 70	
MTVL04C 72, 84	MTVLG40 83	MTWB10U 70	
MTVL0008 84	MTVLG40C 83	MTZM1710 91	
MTVL0011 84	MTVLG40FC 83	MTZM1735 91	
MTVL14C25 84	MTVLH120C 83	MTZM1740 91	
MTVL14FC25 84	MTVLHH150 85	OAP100 64	

Ordering Information

Placing an Order in North American & International Markets

Toll-free within the U.S. and Canada: 800.842.8688

Direct Dial: +1 712.737.8688

Facsimile: 877.613.6300

Direct Sales Email: order@civco.com

Distributor Sales Email: distorder@civco.com

OEM Email: oemorder@civco.com

Office Hours

Monday – Thursday, 7:30 a.m. – 5:00 p.m., U.S. Central Time.

Friday, 7:30 a.m. – 4:00 p.m., U.S. Central Time.

To place an order after business hours, leave a voice mail telephone message, and a customer representative will notify you on the next working day for order verification.

Payment Terms

Net 30 days for customers with approved credit inside the United States and Canada. All orders must be paid in U.S. dollars. Orders from outside the U.S. require advance remittance by wire transfer. Visa, Mastercard, Discover and American Express are accepted. Alternate International payment terms are considered upon request. Delinquent accounts are subject to suspension until payment arrangements are made.

Shipping Terms

F.O.B. point of origin. Freight is prepaid and added to the invoice. CIVCO will select the most efficient method of shipment, unless a specific carrier is requested. Overnight and rush shipments are provided for an additional fee.

Pricing and Discounts

Prices are subject to change without notice. Quantity discounts and blanket order pricing are available. Contact a customer service specialist for details. A \$50 minimum purchase is required with each order.

Sample Requests

Free non-sterile samples are available on selected products. Samples are provided for sizing and fit purposes only and should not be used in clinical procedures.

Return Policy

If you are dissatisfied with a product, contact a CIVCO customer service specialist for advance return authorization and instructions. Returns should be arranged within 30 days of the invoice date and are subject to a twenty-five percent (25%) restocking fee. Returned goods must be in original packaging and in new condition. CIVCO reserves the right to refuse unauthorized returns.

Claims, Shortages or Damages

Open all shipments immediately and inspect for concealed damages, shortages or errors. If goods were damaged in shipping, please hold the package and request a carrier inspection and claim form. Please report any shortages or errors to your CIVCO customer service specialist within 30 days of receipt of shipment to arrange an authorized exchange.

Product Warranty

Reusable products. CIVCO warrants products manufactured by CIVCO and intended to be reusable shall be free from defects in materials and workmanship for 12 months from the date of invoice by CIVCO unless otherwise stated on the product labeling and/or instructions.

Disposable products. CIVCO warrants products manufactured by CIVCO and intended to be disposable (single-use) shall be free from defects in materials and workmanship for 12 months from the date of invoice by CIVCO unless otherwise stated on the product labeling and/or instructions. Sterile disposable products shall be sterile for not less than 12 months from the date of invoice by CIVCO unless otherwise stated on the product labeling and/or instructions.

All products not manufactured by CIVCO are warranted if applicable as defined under the original manufacturer's warranty as stated on the labeling and/or instructions.

Buyer's sole remedy for breach of this warranty will be replacement or repair of the product or part, at CIVCO's option. To the full extent allowed by law, the foregoing warranties and remedies are exclusive and in lieu of all other warranties, terms, or conditions, express or implied, either in fact or by operation of law, statutory or otherwise, including warranties, terms, or conditions of merchantability, fitness for a particular purpose, satisfactory quality, correspondence with description, and noninfringement, all of which are hereby expressly disclaimed.

Notwithstanding the foregoing, CIVCO makes no warranty, nor shall it have any obligation to the customer with respect to any product sold hereunder, if such product has expired according to product labels or has not been used, handled or stored in accordance with written CIVCO guidelines.

Disclaimer. Some countries, states, or provinces do not allow the exclusion or limitation of implied warranties or the limitation of incidental or consequential damages for certain products supplied to consumers, or the limitations of liability for personal injury, so the above limitations and exclusions may be limited in their application to buyer. When the implied warranties are not allowed to be excluded in their entirety, they will be limited to the duration of the applicable written warranty. This warranty gives buyer specific legal rights which may vary depending on local law.

All products may not be licensed in accordance with Canadian law.

Quality Standards

CIVCO is registered to ISO 13485:2003 Quality Standards.

Note: Not all products listed are available in every market.

Please contact your account representative or local distributor for availability.



Global Sales Office

1401 8th Street SE

Orange City, IA 51041

800.842.8688 | +1 712.737.8688

info@civcort.com | www.civcort.com

COPYRIGHT © 2016. CIVCO, HIPFIX, INTERLOC, POSICAST, POSIFIX, AND UNI-FRAME ARE REGISTERED TRADEMARKS OF CIVCO MEDICAL SOLUTIONS. ACCUFORM, ALIGN, BI-AXIAL ARM SUPPORT SYSTEM, BODY PRO-LOK, BODY PRO-LOK ONE, CLAM-LOK, CLEARVISION, COMBIFIX, CONTOURA, COUPLED, C-QUAL, C-QUAL M, CYBERMARK, DOSEMATCH, FEETFIX, FIXATOR, FREEDOMVIEW, FUSIONCOIL, HELPING HANDS, HORIZON, IMRT REINFORCED THERMOPLASTIC, ISO-ALIGN, KNEEFIX, LOK-BAR, MASTERCASE, MONARCH, MRSERIES, MULTIFIX, NEW HORIZON, ONEBRIDGE, ONEPLATFORM, POSIBOARD, POSIREST, POSITILT, PRECISE BITE, PRODIGY, PRONELOK, PRON-PILLO, PROTURA, PUREVISION, REDIFOAM, THORAWEDGE, TRANQUILITY, TRUPONT ARCH, TYPE-S, UNIVERSAL COUCHTOP, VAC-LOK, WING BOARD AND ZENTEC ARE TRADEMARKS OF CIVCO. ALL OTHER TRADEMARKS ARE PROPERTY OF THEIR RESPECTIVE OWNERS. ALL PRODUCTS MAY NOT BE LICENSED IN ACCORDANCE WITH CANADIAN LAW. 2016P1107 REV C